



Recombinant Human Vinculin (VCL), partial

Product Code CSB-EP025812HU1

Relevance

Actin filament (F-actin)-binding protein involved in cell-matrix adhesion and cell-cell adhesion. Regulates cell-surface E-cadherin expression and potentiates mechanosensing by the E-cadherin complex. May also play important roles in cell morphology and locomotion.

Abbreviation Recombinant Human VCL protein, partial

Storage The shelf life is related to many factors, storage state, buffer ingredients, storage temperature and the stability of the protein itself. Generally, the shelf life of liquid form is 6 months at -20°C/-80°C. The shelf life of lyophilized form is 12 months at -20°C/-80°C.

Uniprot No. P18206

Alias Metavinculin ;MV

Product Type Recombinant Protein

Immunogen Species Homo sapiens (Human)

Purity Greater than 90% as determined by SDS-PAGE.

Sequence
PVFHTRTIESILEPVAQQISHLVIMHEEGEVDGKAIPDLTAPVAAVQAAVSNLVR
VGKETVQTTEDQILKRDMPPAFIKVENACTKLVQAAQMLQSDPYSPARDYLI
DGSRGILSGTSDLLLTDFDEAEVRKIIRVCKGILEYLTVAEUVETMEDLVITYTKNL
GPGMTKMAKMIDERQQELTHQEHRVMLVNSMNTVKELLPVLISAMKIFVTTKN
SKNQGIEEALKNRNFTVE

Research Area Cell Adhesion

Source E.coli

Target Names VCL

Expression Region 2-235aa

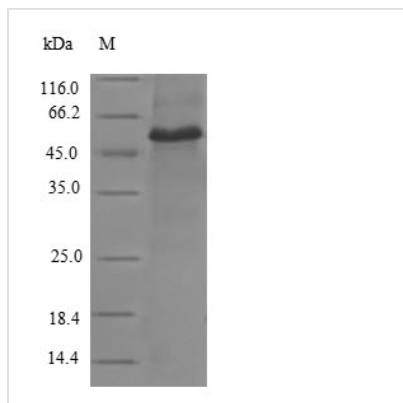
Notes Repeated freezing and thawing is not recommended. Store working aliquots at 4°C for up to one week.

Tag Info N-terminal GST-tagged

Mol. Weight 53.0kDa

Protein Length Partial

Image



(Tris-Glycine gel) Discontinuous SDS-PAGE (reduced) with 5% enrichment gel and 15% separation gel.

Reconstitution

We recommend that this vial be briefly centrifuged prior to opening to bring the contents to the bottom. Please reconstitute protein in deionized sterile water to a concentration of 0.1-1.0 mg/mL. We recommend to add 5-50% of glycerol (final concentration) and aliquot for long-term storage at $-20^{\circ}\text{C}/-80^{\circ}\text{C}$. Our default final concentration of glycerol is 50%. Customers could use it as reference.

Shelf Life

The shelf life is related to many factors, storage state, buffer ingredients, storage temperature and the stability of the protein itself. Generally, the shelf life of liquid form is 6 months at $-20^{\circ}\text{C}/-80^{\circ}\text{C}$. The shelf life of lyophilized form is 12 months at $-20^{\circ}\text{C}/-80^{\circ}\text{C}$.