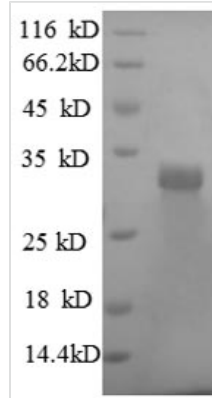




# Recombinant Human Laminin subunit beta-2 (LAMB2), partial

<b>Product Code</b>	CSB-EP012731HU
<b>Relevance</b>	Binding to cells via a high affinity receptor, laminin is thought to mediate the attachment, migration and organization of cells into tissues during bryonic development by interacting with other Extracellular domain matrix components.
<b>Abbreviation</b>	Recombinant Human LAMB2 protein, partial
<b>Storage</b>	The shelf life is related to many factors, storage state, buffer ingredients, storage temperature and the stability of the protein itself. Generally, the shelf life of liquid form is 6 months at -20°C/-80°C. The shelf life of lyophilized form is 12 months at -20°C/-80°C.
<b>Uniprot No.</b>	P55268
<b>Product Type</b>	Recombinant Proteins
<b>Immunogen Species</b>	Homo sapiens (Human)
<b>Purity</b>	Greater than 90% as determined by SDS-PAGE.
<b>Sequence</b>	PDSIEMVATRVLELSIPASAEQIQHLAGAIAERVRS LADVDAILARTVGDVRRAE QLLQDARRARSWAEDEKQKAETVQAAL EEAQRAQGIAQGAIRGAVADTRDTE QTLYQVQERMAGAERALSSAGERARQLDALLEALKLKRAGNSLAASTAEETA GSAQGRAQAEQLLRGPLGDQYQTVKALAE RKAQGVLAQAQARAEQLRDEAR DLLQAAQDKLQRLQELEGTYEENERALESKAAQLDGL EARMRSVLQAINLQVQ IYNTCQ
<b>Research Area</b>	Cell Adhesion
<b>Source</b>	E.coli
<b>Target Names</b>	LAMB2
<b>Expression Region</b>	1530-1798aa
<b>Notes</b>	Repeated freezing and thawing is not recommended. Store working aliquots at 4°C for up to one week.
<b>Tag Info</b>	N-terminal 6xHis-tagged
<b>Mol. Weight</b>	33.3kDa
<b>Protein Length</b>	Partial
<b>Image</b>	



(Tris-Glycine gel) Discontinuous SDS-PAGE (reduced) with 5% enrichment gel and 15% separation gel.

### Shelf Life

The shelf life is related to many factors, storage state, buffer ingredients, storage temperature and the stability of the protein itself.

Generally, the shelf life of liquid form is 6 months at -20°C/-80°C. The shelf life of lyophilized form is 12 months at -20°C/-80°C.