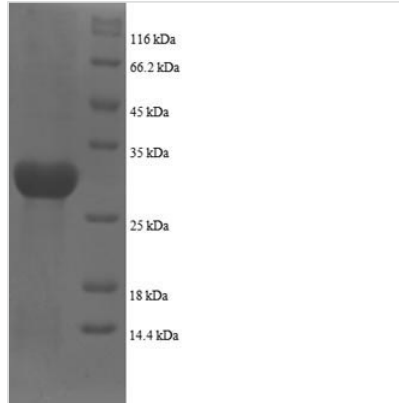




# Recombinant Human Plexin-A1 (PLXNA1), partial

<b>Product Code</b>	CSB-EP883448HU1
<b>Relevance</b>	Coreceptor for SA3A, SA3C, SA3F and SA6D. Necessary for signaling by class 3 saphorins and subsequent remodeling of the cytoskeleton. Plays a role in axon guidance, invasive growth and cell migration. Class 3 saphorins bind to a complex composed of a neuropilin and a plexin. The plexin modulates the affinity of the complex for specific saphorins, and its Cytoplasmic domain is required for the activation of down-stream signaling events in the cytoplasm .
<b>Abbreviation</b>	Recombinant Human PLXNA1 protein, partial
<b>Storage</b>	The shelf life is related to many factors, storage state, buffer ingredients, storage temperature and the stability of the protein itself. Generally, the shelf life of liquid form is 6 months at -20°C/-80°C. The shelf life of lyophilized form is 12 months at -20°C/-80°C.
<b>Uniprot No.</b>	Q9UIW2
<b>Alias</b>	Semaphorin receptor NOV
<b>Product Type</b>	Recombinant Protein
<b>Immunogen Species</b>	Homo sapiens (Human)
<b>Purity</b>	≥ 90% as determined by SDS-PAGE.
<b>Sequence</b>	RAGGGSQPPFRTFSASDWGLTHLVVHEQTGEVYVGAVNRIYKLSGNLTLRA HVTGPVEDNEKCYPPPSVQSCPHGLGSTDNVNKLKLLLDYAANRLLACGSASQ GICQFLRLDDLFLKLGEPHHRKEHYLSSVQEAGSMAGVLIAGPPGQGQAKLFVG TPIDGKSEYFPTLSSRRLMANEEDADMFGFVYQDEFVSSQLKIPSDTLKFFPAF DIYYVYSFRSEQFVYYLTLQLDTQLTSPDAAGEHFFTSKIVRLCVDLDPKFYSYV
<b>Research Area</b>	Neuroscience
<b>Source</b>	E.coli
<b>Target Names</b>	PLXNA1
<b>Expression Region</b>	32-296aa
<b>Notes</b>	Repeated freezing and thawing is not recommended. Store working aliquots at 4°C for up to one week.
<b>Tag Info</b>	N-terminal 6xHis-tagged
<b>Mol. Weight</b>	33.3kDa
<b>Protein Length</b>	Partial
<b>Image</b>	



(Tris-Glycine gel) Discontinuous SDS-PAGE (reduced) with 5% enrichment gel and 15% separation gel.

### Reconstitution

We recommend that this vial be briefly centrifuged prior to opening to bring the contents to the bottom. Please reconstitute protein in deionized sterile water to a concentration of 0.1-1.0 mg/mL. We recommend to add 5-50% of glycerol (final concentration) and aliquot for long-term storage at -20°C/-80°C. Our default final concentration of glycerol is 50%. Customers could use it as reference.

### Shelf Life

The shelf life is related to many factors, storage state, buffer ingredients, storage temperature and the stability of the protein itself. Generally, the shelf life of liquid form is 6 months at -20°C/-80°C. The shelf life of lyophilized form is 12 months at -20°C/-80°C.