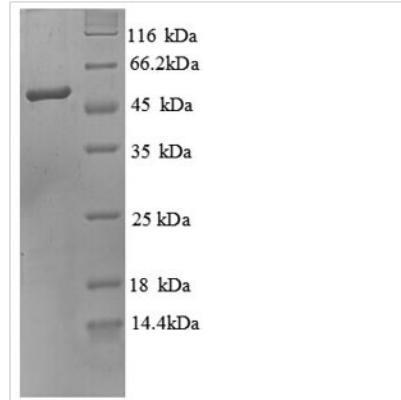




Recombinant Human O-phosphoseryl-tRNA (Sec) selenium transferase (SEPSECS), partial

Product Code	CSB-EP888032HU1
Relevance	Converts O-phosphoseryl-tRNA(Sec) to selenocysteinyl-tRNA(Sec) required for selenoprotein biosynthesis.
Abbreviation	Recombinant Human SEPSECS protein, partial
Storage	The shelf life is related to many factors, storage state, buffer ingredients, storage temperature and the stability of the protein itself. Generally, the shelf life of liquid form is 6 months at -20°C/-80°C. The shelf life of lyophilized form is 12 months at -20°C/-80°C.
Uniprot No.	Q9HD40
Alias	Liver-pancreas antigen ;LPSLA-p35SLA/LP autoantigen;Selenocysteine synthase ;Sec synthase;Selenocysteinyl-tRNA(Sec) synthase;Sep-tRNA:Sec-tRNA synthase ;SepSecSSoluble liver antigen ;SLAUGA suppressor tRNA-associated proteintRNA(Ser/Sec)-associated antigenic protein
Product Type	Recombinant Protein
Immunogen Species	Homo sapiens (Human)
Purity	Greater than 90% as determined by SDS-PAGE.
Sequence	SFAAGERLVSPAYVRQGCEARRSHEHLIRLLLEKKGKCPENGWDESTLELFLHE LAIMDSNNFLGNCVGEREGRVASALVARRHYRFIHGIGRSGDISAVQPKAAG SLLNKITNSLVLDIIKLAGVHTVANCFVVPMTGMSLTLCLTLRHKRPKAKYII WPRIDQKSCFKSMITAGFEPVVIENVLEGDELRTDLKAVEAKVQELGPDICILCIH STTSCFAPRVPDRLEELAVICANYDIPHIVNNAYGVQSSKCMHLIQGARVGRI DAFVQSLDKNFMVPVGGAIAGFNDSFIQEISKMYPGRASASPLDLVITLLSLG SNGYKLLKERKEMFSYLSNQIKLSEAYNERLLHTPHNPISLAMTLKTLDEHR DKAVTQLGSMFTRQVSGARVVPLGSMQTVSGYTFRGMSTNNYPCAYLN AASAIGMKMQDVDLFI
Research Area	Metabolism
Source	E.coli
Target Names	SEPSECS
Expression Region	5-451aa
Notes	Repeated freezing and thawing is not recommended. Store working aliquots at 4°C for up to one week.
Tag Info	N-terminal 6xHis-tagged
Mol. Weight	53.4kDa
Protein Length	Partial
Image	



(Tris-Glycine gel) Discontinuous SDS-PAGE (reduced) with 5% enrichment gel and 15% separation gel.

Reconstitution

We recommend that this vial be briefly centrifuged prior to opening to bring the contents to the bottom. Please reconstitute protein in deionized sterile water to a concentration of 0.1-1.0 mg/mL. We recommend to add 5-50% of glycerol (final concentration) and aliquot for long-term storage at -20°C/-80°C. Our default final concentration of glycerol is 50%. Customers could use it as reference.

Shelf Life

The shelf life is related to many factors, storage state, buffer ingredients, storage temperature and the stability of the protein itself. Generally, the shelf life of liquid form is 6 months at -20°C/-80°C. The shelf life of lyophilized form is 12 months at -20°C/-80°C.