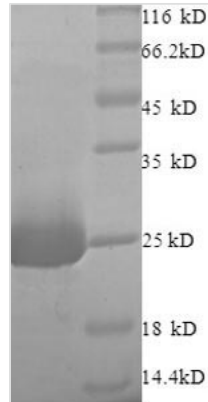




# Recombinant Rat Vesicle-fusing ATPase (Nsf), partial

<b>Product Code</b>	CSB-RP154574r(N)
<b>Relevance</b>	Required for vesicle-mediated transport. Catalyzes the fusion of transport vesicles within the Golgi cisternae. Is also required for transport from the endoplasmic reticulum to the Golgi stack. Ses to function as a fusion protein required for the delivery of cargo proteins to all compartments of the Golgi stack independent of vesicle origin. Interaction with AMPAR subunit GRIA2 leads to influence GRIA2 mbrane cycling.
<b>Abbreviation</b>	Recombinant Rat Nsf protein, partial
<b>Storage</b>	The shelf life is related to many factors, storage state, buffer ingredients, storage temperature and the stability of the protein itself. Generally, the shelf life of liquid form is 6 months at -20°C/-80°C. The shelf life of lyophilized form is 12 months at -20°C/-80°C.
<b>Uniprot No.</b>	Q9QUL6
<b>Alias</b>	N-ethylmaleimide-sensitive fusion protein ;NEM-sensitive fusion proteinVesicular-fusion protein NSF
<b>Product Type</b>	Recombinant Protein
<b>Immunogen Species</b>	Rattus norvegicus (Rat)
<b>Purity</b>	≥ 90% as determined by SDS-PAGE.
<b>Sequence</b>	QAARCPTDELSLSNCAVVNEKDYQSGQHVMVRTSPNHKYIFTLRTHPSVVPG CIAFSLPQRKWAGLSIGQDIEVALYSFDKAKQCIGTMTIEIDFLQKKNIDSNPYD TDKMAAEFIQQFNHQAFSVGQQLVFSFNDKLFGLLVKDIEAMDPSILKGEPAS GKRQKIEVGLVVGNSQVAFEKAENSSLNLIGKAKTKENRQSII
<b>Research Area</b>	Others
<b>Source</b>	E.coli
<b>Target Names</b>	Nsf
<b>Expression Region</b>	7-209aa
<b>Notes</b>	Repeated freezing and thawing is not recommended. Store working aliquots at 4°C for up to one week.
<b>Tag Info</b>	N-terminal 6xHis-tagged
<b>Mol. Weight</b>	26.5kDa
<b>Protein Length</b>	Partial
<b>Image</b>	



(Tris-Glycine gel) Discontinuous SDS-PAGE (reduced) with 5% enrichment gel and 15% separation gel.

### Reconstitution

We recommend that this vial be briefly centrifuged prior to opening to bring the contents to the bottom. Please reconstitute protein in deionized sterile water to a concentration of 0.1-1.0 mg/mL. We recommend to add 5-50% of glycerol (final concentration) and aliquot for long-term storage at -20°C/-80°C. Our default final concentration of glycerol is 50%. Customers could use it as reference.

### Shelf Life

The shelf life is related to many factors, storage state, buffer ingredients, storage temperature and the stability of the protein itself. Generally, the shelf life of liquid form is 6 months at -20°C/-80°C. The shelf life of lyophilized form is 12 months at -20°C/-80°C.