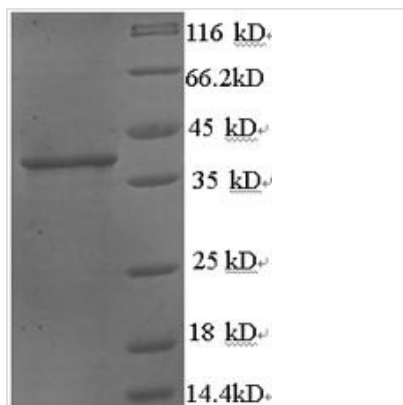


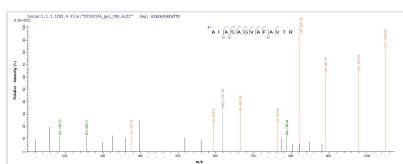


Recombinant Human Protein Wnt-3a (WNT3A), partial

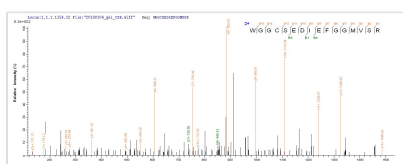
Product Code	CSB-EP026136HU1
Relevance	Ligand for members of the frizzled family of seven transmembrane receptors. Wnt-3 and Wnt-3a play distinct roles in cell-cell signaling during morphogenesis of the developing neural tube.
Abbreviation	Recombinant Human WNT3A protein, partial
Storage	The shelf life is related to many factors, storage state, buffer ingredients, storage temperature and the stability of the protein itself. Generally, the shelf life of liquid form is 6 months at -20°C/-80°C. The shelf life of lyophilized form is 12 months at -20°C/-80°C.
Uniprot No.	P56704
Product Type	Recombinant Protein
Immunogen Species	Homo sapiens (Human)
Purity	Greater than 90% as determined by SDS-PAGE.
Sequence	SYPIWWSLAVGPQYSSLGSQLCASIPGLVLPKQLRFCRNYVEIMPSVAEGIKI GIQECQHQRGRRWNCCTTVHDSLAIIFGPVLDKATRESAFVHAIASAGVAFVAVT RSCAEGTAAICGCSSRHQGSPPGKGWKGGCSEDIIEFGGMVSREFADAREN RPDARSAMNRHNNNEAGRQAIASHMHLKCKCHGLSGSCEVKTCWWSQPDFR AIGDFLKDKYDSASEMVVEKHRESRGWVETLRPRYTYFKVPTERDLVYYEASP NFCEPNPETGSFGTRDRTCNVSSHGIDGCDLLCCGRGHNARAERRREKRCRC VFHWCCYVSCQECTRVYDVHTC
Research Area	Signal Transduction
Source	E.coli
Target Names	WNT3A
Expression Region	19-351aa
Notes	Repeated freezing and thawing is not recommended. Store working aliquots at 4°C for up to one week.
Tag Info	N-terminal 6xHis-tagged
Mol. Weight	41.3kDa
Protein Length	Partial
Image	



(Tris-Glycine gel) Discontinuous SDS-PAGE (reduced) with 5% enrichment gel and 15% separation gel.



Based on the SEQUEST from database of E.coli host and target protein, the LC-MS/MS Analysis result of CSB-RP155494h could indicate that this peptide derived from E.coli-expressed Homo sapiens (Human) WNT3A.



Based on the SEQUEST from database of E.coli host and target protein, the LC-MS/MS Analysis result of CSB-RP155494h could indicate that this peptide derived from E.coli-expressed Homo sapiens (Human) WNT3A.

Reconstitution

We recommend that this vial be briefly centrifuged prior to opening to bring the contents to the bottom. Please reconstitute protein in deionized sterile water to a concentration of 0.1-1.0 mg/mL. We recommend to add 5-50% of glycerol (final concentration) and aliquot for long-term storage at -20°C/-80°C. Our default final concentration of glycerol is 50%. Customers could use it as reference.

Shelf Life

The shelf life is related to many factors, storage state, buffer ingredients, storage temperature and the stability of the protein itself. Generally, the shelf life of liquid form is 6 months at -20°C/-80°C. The shelf life of lyophilized form is 12 months at -20°C/-80°C.