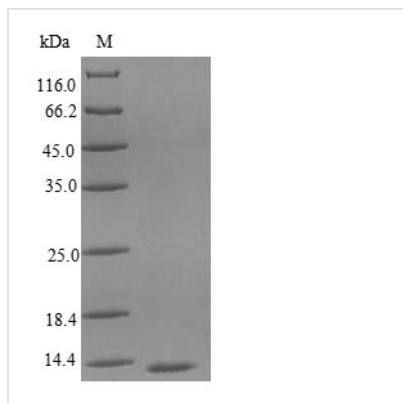




Recombinant Chicken Interleukin-8 (CXCL8), partial

Product Code	CSB-EP011671CH1
Relevance	May be an autocrine factor that promotes the growth of fibroblasts and is involved in the neoplastic transformation of fibroblasts by v-Src. Chotactic for peripheral blood mononuclear cells as well as for heterophils.
Abbreviation	Recombinant Chicken CXCL8 protein, partial
Storage	The shelf life is related to many factors, storage state, buffer ingredients, storage temperature and the stability of the protein itself. Generally, the shelf life of liquid form is 6 months at -20°C/-80°C. The shelf life of lyophilized form is 12 months at -20°C/-80°C.
Uniprot No.	P08317
Alias	9E3C-X-C motif chemokine EF-4Chemokine (C-X-C motif) ligand 8Embryo fibroblast protein 1 ;EMF-1
Product Type	Recombinant Protein
Immunogen Species	Gallus gallus (Chicken)
Purity	≥ 90% as determined by SDS-PAGE.
Sequence	ALSQGRTLVKMGNELRCQCISTHSHKFIHPKSIQDVKLTSPSGPHCKNVEIIATLKD GREVCLDPTAPWVQLIVKALMAKAQLNSDAP
Research Area	Others
Source	E.coli
Target Names	CXCL8
Expression Region	17-102aa
Notes	Repeated freezing and thawing is not recommended. Store working aliquots at 4°C for up to one week.
Tag Info	N-terminal 6xHis-tagged
Mol. Weight	13.4kDa
Protein Length	Partial
Image	



(Tris-Glycine gel) Discontinuous SDS-PAGE (reduced) with 5% enrichment gel and 15% separation gel.

Reconstitution

We recommend that this vial be briefly centrifuged prior to opening to bring the contents to the bottom. Please reconstitute protein in deionized sterile water to a concentration of 0.1-1.0 mg/mL. We recommend to add 5-50% of glycerol (final concentration) and aliquot for long-term storage at -20°C/-80°C. Our default final concentration of glycerol is 50%. Customers could use it as reference.

Shelf Life

The shelf life is related to many factors, storage state, buffer ingredients, storage temperature and the stability of the protein itself. Generally, the shelf life of liquid form is 6 months at -20°C/-80°C. The shelf life of lyophilized form is 12 months at -20°C/-80°C.