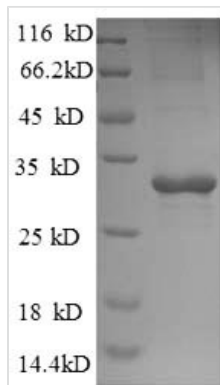




Recombinant *Saccharomyces cerevisiae* Trehalose-phosphatase (TPS2), partial

Product Code	CSB-EP333628SVG
Relevance	Phosphatase catalytic subunit of the trehalose synthase complex that catalyzes the production of trehalose from glucose-6-phosphate and UDP-glucose in a two step process.
Abbreviation	Recombinant <i>Saccharomyces cerevisiae</i> TPS2 protein, partial
Storage	The shelf life is related to many factors, storage state, buffer ingredients, storage temperature and the stability of the protein itself. Generally, the shelf life of liquid form is 6 months at -20°C/-80°C. The shelf life of lyophilized form is 12 months at -20°C/-80°C.
Uniprot No.	P31688
Product Type	Recombinant Proteins
Immunogen Species	<i>Saccharomyces cerevisiae</i> (strain ATCC 204508 / S288c) (Baker's yeast)
Purity	Greater than 90% as determined by SDS-PAGE.
Sequence	KKRQRIINCVTQLPYKIQLGESNDDWKISATTGNSALFSSLEYLQFDSTEYEQH VVGWTGEITRTERNLFTREAKEKPQDLDDPLYLTKEQINGLTTTTLQDHMKSD KEAKTDTTQTAPVTNNVHPVWLLRKNQSRWRNYAEKVIWPTFHYILNPSNEG EQEKNWWYDYVKFNEAYAQQIGEVYRKGDIIWIHDYYLLLLPQLLRMKFNDESI IIGYFHHAPWPSNEYFRCLP
Research Area	Others
Source	E.coli
Target Names	TPS2
Expression Region	11-243aa
Notes	Repeated freezing and thawing is not recommended. Store working aliquots at 4°C for up to one week.
Tag Info	N-terminal 6xHis-tagged
Mol. Weight	31.8kDa
Protein Length	Partial
Image	



(Tris-Glycine gel) Discontinuous SDS-PAGE (reduced) with 5% enrichment gel and 15% separation gel.

Shelf Life

The shelf life is related to many factors, storage state, buffer ingredients, storage temperature and the stability of the protein itself.

Generally, the shelf life of liquid form is 6 months at -20°C/-80°C. The shelf life of lyophilized form is 12 months at -20°C/-80°C.