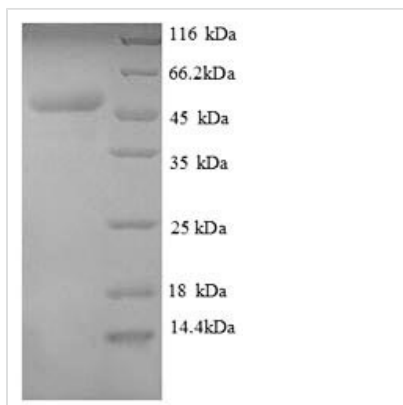


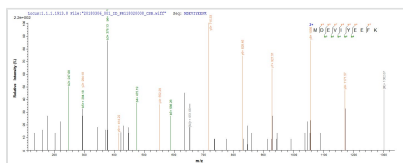


Recombinant Escherichia coli Transcription termination factor Rho (rho)

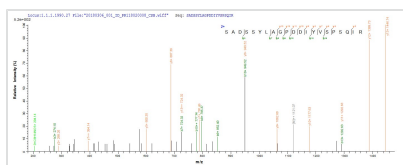
Product Code	CSB-EP360362ENV
Relevance	Facilitates transcription termination by a mechanism that involves Rho binding to the nascent RNA, activation of Rho's RNA-dependent ATPase activity, and release of the mRNA from the DNA tplate. RNA-dependent NTPase which utilizes all four ribonucleoside triphosphates as substrates.
Abbreviation	Recombinant E.coli rho protein
Storage	The shelf life is related to many factors, storage state, buffer ingredients, storage temperature and the stability of the protein itself. Generally, the shelf life of liquid form is 6 months at -20°C/-80°C. The shelf life of lyophilized form is 12 months at -20°C/-80°C.
Uniprot No.	P0AG30
Alias	ATP-dependent helicase Rho
Product Type	Recombinant Protein
Immunogen Species	Escherichia coli (strain K12)
Purity	Greater than 90% as determined by SDS-PAGE.
Sequence	MNLTELKNTVPSELITLGENMGLENLARMRKQDIIFAILKQHAKSGEDIFGDGVL EILQDGFGLRSADSSYLGPDDIYVSPSQIRRFNLRTGDTISGKIRPPKEGERY FALLKVNEVNFDPENARNKILFENLTPLHANSRLRMERGNGSTEDLTARVLDL ASPIGRGQRGLIVAPPKAGKTMLLQNIASIAYNHPDCVLMVLLIDERPEEVTE MQRLVKGEVVASTFDEPASRHVQVAEMVIEKAKRLVEHKKDVIILLDSITRLAR AYNTVVPASGKVLTTGGVDANALHRPKRFFGAARNVEEGSLTIIATALIDTGSK MDEVIYEEFKGTGNMELHLSRKAIEKRVFPAIDYNRSCTRKEELLTTQEELQKM WILRKIIHPMGEIDAMEFLINKLAMTKTNDFFEMMKRS
Research Area	Others
Source	E.coli
Target Names	rho
Expression Region	1-419aa
Notes	Repeated freezing and thawing is not recommended. Store working aliquots at 4°C for up to one week.
Tag Info	N-terminal 6xHis-tagged
Mol. Weight	51.0kDa
Protein Length	Full Length
Image	



(Tris-Glycine gel) Discontinuous SDS-PAGE (reduced) with 5% enrichment gel and 15% separation gel.



Based on the SEQUEST from database of E.coli host and target protein, the LC-MS/MS Analysis result of CSB-RP166274Ba could indicate that this peptide derived from E.coli-expressed Escherichia coli (strain K12) rho.



Based on the SEQUEST from database of E.coli host and target protein, the LC-MS/MS Analysis result of CSB-RP166274Ba could indicate that this peptide derived from E.coli-expressed Escherichia coli (strain K12) rho.

Reconstitution

We recommend that this vial be briefly centrifuged prior to opening to bring the contents to the bottom. Please reconstitute protein in deionized sterile water to a concentration of 0.1-1.0 mg/mL. We recommend to add 5-50% of glycerol (final concentration) and aliquot for long-term storage at -20°C/-80°C. Our default final concentration of glycerol is 50%. Customers could use it as reference.

Shelf Life

The shelf life is related to many factors, storage state, buffer ingredients, storage temperature and the stability of the protein itself.

Generally, the shelf life of liquid form is 6 months at -20°C/-80°C. The shelf life of lyophilized form is 12 months at -20°C/-80°C.