



Recombinant Rat Vascular cell adhesion protein 1 (Vcam1), partial

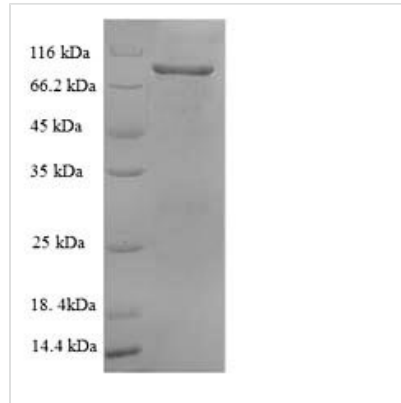
Product Code	CSB-EP025809RA1
Relevance	Important in cell-cell recognition. Appears to function in leukocyte-endothelial cell adhesion. Interacts with integrin alpha-4/beta-1 (ITGA4/ITGB1) on leukocytes, and mediates both adhesion and signal transduction. The VCAM1/ITGA4/ITGB1 interaction may play a pathophysiologic role both in immune responses and in leukocyte migration to sites of inflammation.
Abbreviation	Recombinant Rat Vcam1 protein, partial
Storage	The shelf life is related to many factors, storage state, buffer ingredients, storage temperature and the stability of the protein itself. Generally, the shelf life of liquid form is 6 months at -20°C/-80°C. The shelf life of lyophilized form is 12 months at -20°C/-80°C.
Uniprot No.	P29534
Alias	CD106
Product Type	Recombinant Protein
Immunogen Species	Rattus norvegicus (Rat)
Purity	Greater than 90% as determined by SDS-PAGE.
Sequence	PEYKTLAQIGDSMLLTCSTTGCESPFSWRTQIDSPLNGKVKTEGAKSVLTMD PVSFENEHSYLCTATCNSGKLERGIQVDIYSFPKDPEIQFSGPLEVGKPVMMVKC LAPDVYPIDRLEIELFKGDRMLMKQDFVDEMAKKSLETKSLEVIFTPVIEDIEKAL VCRAKLYIDQTD SIPKERETVRELQVYTSPKNTEISVHPSTRLHEGAAVTMTCA SEGLPAPEIFWSKLDNGVLQLLSGNATLTLIAMRMEDSGIYVCEGVNLVGRD KTEVELIVQEKPFVTDISPGSQVAAQVGDSVVLTC AAVGCDS PFSWRTQTDS PLNGEVRDEGATSTLTLSPVGVEDEHSYLCTVTCQRRKLEKTIQVEVYSFPED PEIEISGPLVHGRPVTVNCTV PNVY PFDHLEIELLKG ETTLLNKFLREEIGTKSLE TKSLEMTFIPTAEDTGKALVCLAKLHSSQMESEPKQRQSTQTLYVNVAPKEPTI WVSPSPVEEGSPVNLTCSSDGFPTPKILWSRQLKNGELQPLSQNTTLSFMA TKMEDSGIYVCEGINEAGISKKSVELIQGSSKDIQLTVFPSKSVKEGDTVIIISCT CGSVPEIWIILKKKAKTGDMVLKSVNGSYTIRKAQLQDAGVYECESKTEVGSQ RSLTLDVKGKENNKDYFSP
Research Area	Others
Source	E.coli
Target Names	Vcam1
Expression Region	31-697aa
Notes	Repeated freezing and thawing is not recommended. Store working aliquots at 4°C for up to one week.
Tag Info	N-terminal 6xHis-tagged



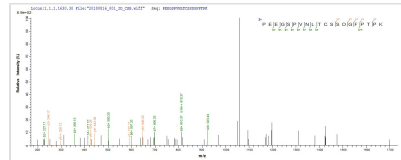
Mol. Weight 77.4kDa

Protein Length Partial

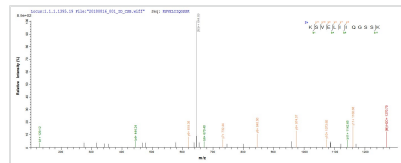
Image



(Tris-Glycine gel) Discontinuous SDS-PAGE (reduced) with 5% enrichment gel and 15% separation gel.



Based on the SEQUEST from database of E.coli host and target protein, the LC-MS/MS Analysis result of CSB-RP167294r could indicate that this peptide derived from E.coli-expressed *Rattus norvegicus* (Rat) Vcam1.



Based on the SEQUEST from database of E.coli host and target protein, the LC-MS/MS Analysis result of CSB-RP167294r could indicate that this peptide derived from E.coli-expressed *Rattus norvegicus* (Rat) Vcam1.

Reconstitution

We recommend that this vial be briefly centrifuged prior to opening to bring the contents to the bottom. Please reconstitute protein in deionized sterile water to a concentration of 0.1-1.0 mg/mL. We recommend to add 5-50% of glycerol (final concentration) and aliquot for long-term storage at -20°C/-80°C. Our default final concentration of glycerol is 50%. Customers could use it as reference.

Shelf Life

The shelf life is related to many factors, storage state, buffer ingredients, storage temperature and the stability of the protein itself. Generally, the shelf life of liquid form is 6 months at -20°C/-80°C. The shelf life of lyophilized form is 12 months at -20°C/-80°C.