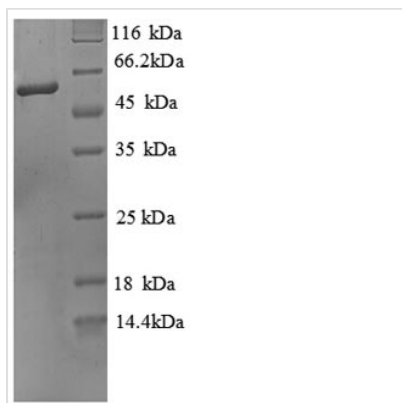




Recombinant Mouse Alkaline phosphatase, tissue-nonspecific isozyme (Alpl), partial

Product Code	CSB-RP170394m
Abbreviation	Recombinant Mouse Alpl protein, partial
Storage	The shelf life is related to many factors, storage state, buffer ingredients, storage temperature and the stability of the protein itself. Generally, the shelf life of liquid form is 6 months at -20°C/-80°C. The shelf life of lyophilized form is 12 months at -20°C/-80°C.
Uniprot No.	P09242
Alias	Alkaline phosphatase 2Alkaline phosphatase liver/bone/kidney isozyme
Product Type	Recombinant Protein
Immunogen Species	Mus musculus (Mouse)
Purity	≥ 90% as determined by SDS-PAGE.
Sequence	PEKERDPSYWRQQAQETLKNALKLQKLNTNVAKNVIMFLGDGMGVSTVTAAR ILKGQLHHNTGEETRLEMDKFPFVALSKTYNTNAQVPDSAGTATAYLCGVKAN EGTVGVSAATERTRCNTTQGNEVTSILRWAKDAGKSVGIVTTTRVNHATPSAA YAHSADRDWYSDNEMPPEALSQGCKDIAYQLMHNIKDIDVIMGGGRKYMYPK NRTDVEYELDEKARGTRLDGLDLISIWKSFKPRHKHSHYVWNRTPELLALDPSR VDYLLGLFEPGDMQYELNRNNTDPSLSEMVEVALRILTKNLKGFLLVEGGRI DHGHEGKAKQALHEAVEMDQAIGKAGAMTSQKDTLTVVTADHSHVFTFGGY TPRGNISIFGLAPMVSDTDKPKFTAILYGNPGYKVVDGERENVSMVDYAHNN YQAQSAVPLRHETHGGEDVAVFAKGPMALLHGVHEQNYIPHVMAVASCIGA NLDHCAWAGSG
Research Area	Others
Source	E.coli
Target Names	Alpl
Expression Region	20-503aa
Notes	Repeated freezing and thawing is not recommended. Store working aliquots at 4°C for up to one week.
Tag Info	N-terminal 6xHis-tagged
Mol. Weight	57.4kDa
Protein Length	Partial

Image



(Tris-Glycine gel) Discontinuous SDS-PAGE (reduced) with 5% enrichment gel and 15% separation gel.

Reconstitution

We recommend that this vial be briefly centrifuged prior to opening to bring the contents to the bottom. Please reconstitute protein in deionized sterile water to a concentration of 0.1-1.0 mg/mL. We recommend to add 5-50% of glycerol (final concentration) and aliquot for long-term storage at -20°C/-80°C. Our default final concentration of glycerol is 50%. Customers could use it as reference.

Shelf Life

The shelf life is related to many factors, storage state, buffer ingredients, storage temperature and the stability of the protein itself. Generally, the shelf life of liquid form is 6 months at -20°C/-80°C. The shelf life of lyophilized form is 12 months at -20°C/-80°C.