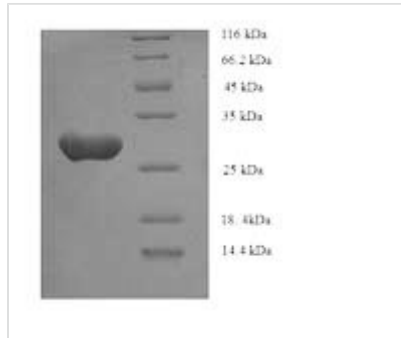


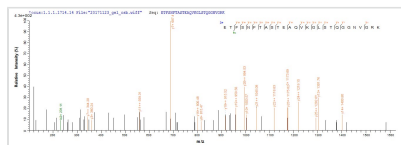


Recombinant Human Asialoglycoprotein receptor 1 (ASGR1), partial

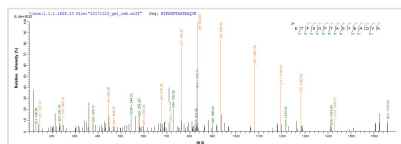
Product Code	CSB-EP002207HU
Relevance	Mediates the endocytosis of plasma glycoproteins to which the terminal sialic acid residue on their complex carbohydrate moieties has been removed. The receptor recognizes terminal galactose and N-acetylgalactosamine units. After ligand binding to the receptor, the resulting complex is internalized and transported to a sorting organelle, where receptor and ligand are disassociated. The receptor then returns to the cell membrane surface.
Abbreviation	Recombinant Human ASGR1 protein, partial
Storage	The shelf life is related to many factors, storage state, buffer ingredients, storage temperature and the stability of the protein itself. Generally, the shelf life of liquid form is 6 months at -20°C/-80°C. The shelf life of lyophilized form is 12 months at -20°C/-80°C.
Uniprot No.	P07306
Alias	C-type lectin domain family 4 member H1Hepatic lectin H1 ;HL-1
Product Type	Recombinant Protein
Immunogen Species	Homo sapiens (Human)
Purity	≥ 90% as determined by SDS-PAGE.
Sequence	EELRGLRETFSNFTASTEAVKGLSTQGGNVGRKMKLSLESQLEKQQKDLSED HSSLLLHVKQFVSDLRSLSCQMAALQGNISERTCCPVNWVEHERSCYWFSR SGKAWADADNYCRLEDAHLVVVTSWEEQKFVQHHIGPVNTWMGLHDQNGP WKWVDGTDYETGFKNWRPEQPDDWYGHGLGGGEDCAHFTDDGRWDDV CQRPYRWVCETELDKASQEPPLL
Research Area	Signal Transduction
Source	E.coli
Target Names	ASGR1
Expression Region	68-291aa
Notes	Repeated freezing and thawing is not recommended. Store working aliquots at 4°C for up to one week.
Tag Info	N-terminal 6xHis-tagged
Mol. Weight	29.7kDa
Protein Length	Extracellular Domain
Image	



(Tris-Glycine gel) Discontinuous SDS-PAGE (reduced) with 5% enrichment gel and 15% separation gel.



Based on the SEQUEST from database of E.coli host and target protein, the LC-MS/MS Analysis result of CSB-RP174694h could indicate that this peptide derived from E.coli-expressed Homo sapiens (Human) ASGR1.



Based on the SEQUEST from database of E.coli host and target protein, the LC-MS/MS Analysis result of CSB-RP174694h could indicate that this peptide derived from E.coli-expressed Homo sapiens (Human) ASGR1.

Reconstitution

We recommend that this vial be briefly centrifuged prior to opening to bring the contents to the bottom. Please reconstitute protein in deionized sterile water to a concentration of 0.1-1.0 mg/mL. We recommend to add 5-50% of glycerol (final concentration) and aliquot for long-term storage at -20°C/-80°C. Our default final concentration of glycerol is 50%. Customers could use it as reference.

Shelf Life

The shelf life is related to many factors, storage state, buffer ingredients, storage temperature and the stability of the protein itself.

Generally, the shelf life of liquid form is 6 months at -20°C/-80°C. The shelf life of lyophilized form is 12 months at -20°C/-80°C.