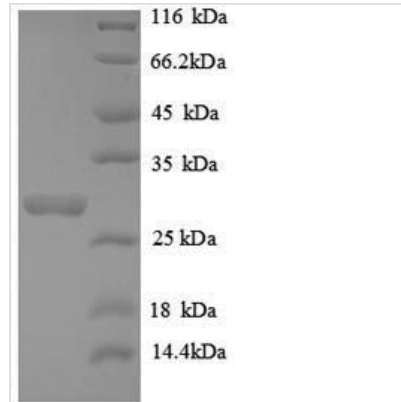




Recombinant Human Telomerase protein component 1 (TEP1), partial

Product Code	CSB-EP859117HU1
Relevance	Component of the telomerase ribonucleoprotein complex that is essential for the replication of chromosome termini. Also component of the ribonucleoprotein vaults particle, a multi-subunit structure involved in nucleo-Cytoplasmic domain transport. Responsible for the localizing and stabilizing vault RNA (vRNA) association in the vault ribonucleoprotein particle. Binds to TERC .
Abbreviation	Recombinant Human TEP1 protein, partial
Storage	The shelf life is related to many factors, storage state, buffer ingredients, storage temperature and the stability of the protein itself. Generally, the shelf life of liquid form is 6 months at -20°C/-80°C. The shelf life of lyophilized form is 12 months at -20°C/-80°C.
Uniprot No.	Q99973
Product Type	Recombinant Proteins
Immunogen Species	Homo sapiens (Human)
Purity	Greater than 90% as determined by SDS-PAGE.
Sequence	EKLHGHVSAHPDILSLENRCLAMLPDLQPLEKLHQHVSTHSDILSLKNQCLATL PDLKTMEKPHGYVSAHPDILSLENQCLATLSDLKTMEKPHGHVSAHPDILSLEN RCLATLSSLKSTVSASPLFQSLQISHMTQADLYRVNNSNCLLSEPPSWRAQHF SKGLDLSTCPIALKSISATETAQEATLGRWFDSEEKKAETQMPSYSLSLGEEE EVEDLAVKLT
Research Area	Epigenetics and Nuclear Signaling
Source	E.coli
Target Names	TEP1
Expression Region	2-226aa
Notes	Repeated freezing and thawing is not recommended. Store working aliquots at 4°C for up to one week.
Tag Info	N-terminal 6xHis-tagged
Mol. Weight	28.8kDa
Protein Length	Partial
Image	



(Tris-Glycine gel) Discontinuous SDS-PAGE (reduced) with 5% enrichment gel and 15% separation gel.

Shelf Life

The shelf life is related to many factors, storage state, buffer ingredients, storage temperature and the stability of the protein itself.

Generally, the shelf life of liquid form is 6 months at -20°C/-80°C. The shelf life of lyophilized form is 12 months at -20°C/-80°C.