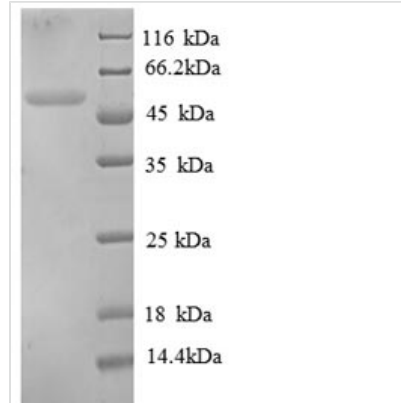




Recombinant Chicken Tubulin beta-1 chain, partial

Product Code	CSB-EP025319CH1
Relevance	Tubulin is the major constituent of microtubules. It binds two moles of GTP, one at an exchangeable site on the beta chain and one at a non-exchangeable site on the alpha chain.
Abbreviation	Recombinant Chicken Tubulin beta-1 chain protein, partial
Storage	The shelf life is related to many factors, storage state, buffer ingredients, storage temperature and the stability of the protein itself. Generally, the shelf life of liquid form is 6 months at -20°C/-80°C. The shelf life of lyophilized form is 12 months at -20°C/-80°C.
Uniprot No.	P09203
Product Type	Recombinant Protein
Immunogen Species	Gallus gallus (Chicken)
Purity	≥ 90% as determined by SDS-PAGE.
Sequence	MREIVHIQAGQCQGNQIGAKFWEVISDEHGIDPTGSYHGDSDLQLERINVYYNE AAGNKYVPRAILVDLEPGTMDSVRSRSGPFGQIFRPDNFVFGQSGAGNNWAKGH YTEGAELVDSVLDVVRKESESCDCLQGFQLTHSLGGGTGSGMGTLISKIREE YPDRIMNTFSVMPSPKVS DTVVEPYNATVSVHQLVENTDETYCIDNEALYDICF RTLKLTPTTYGDLNHLVSATMSGVTTCLRFPGQLNADLRKLAVNMVFPRLHF FMPGFAPLTSRGSQQYRALTVP ELTQQMFDSKNMMAACDPRHGRYLTVA AIF RGRMSMKEVDEQMLNVQKNSSYFVEWIPNNVKTA VCDIPPRGLKMSATFIG NSTAIQELFKRISEQFTAMFRRKAF LHWYTGEGMDEMEFTEAESNMNDLVSE YQQYQDATADEQGEFEEE
Research Area	Others
Source	E.coli
Expression Region	1-439aa
Notes	Repeated freezing and thawing is not recommended. Store working aliquots at 4°C for up to one week.
Tag Info	N-terminal 6xHis-tagged
Mol. Weight	53.3kDa
Protein Length	Partial
Image	



(Tris-Glycine gel) Discontinuous SDS-PAGE (reduced) with 5% enrichment gel and 15% separation gel.

Reconstitution

We recommend that this vial be briefly centrifuged prior to opening to bring the contents to the bottom. Please reconstitute protein in deionized sterile water to a concentration of 0.1-1.0 mg/mL. We recommend to add 5-50% of glycerol (final concentration) and aliquot for long-term storage at -20°C/-80°C. Our default final concentration of glycerol is 50%. Customers could use it as reference.

Shelf Life

The shelf life is related to many factors, storage state, buffer ingredients, storage temperature and the stability of the protein itself. Generally, the shelf life of liquid form is 6 months at -20°C/-80°C. The shelf life of lyophilized form is 12 months at -20°C/-80°C.