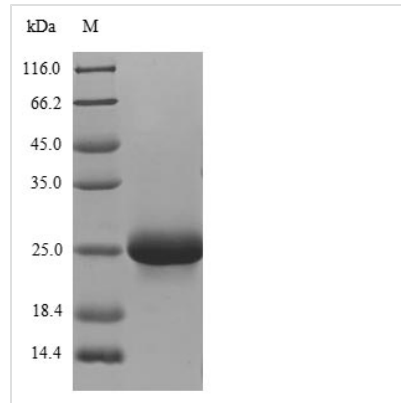




Recombinant Human ATP-sensitive inward rectifier potassium channel 1 (KCNJ1), partial

Product Code	CSB-YP012047HU
Relevance	In the kidney, probably plays a major role in potassium homeostasis. Inward rectifier potassium channels are characterized by a greater tendency to allow potassium to flow into the cell rather than out of it. Their voltage dependence is regulated by the concentration of Extracellular domain potassium; as external potassium is raised, the voltage range of the channel opening shifts to more positive voltages. The inward rectification is mainly due to the blockage of outward current by internal magnesium. This channel is activated by internal ATP and can be blocked by external barium.
Abbreviation	Recombinant Human KCNJ1 protein, partial
Storage	The shelf life is related to many factors, storage state, buffer ingredients, storage temperature and the stability of the protein itself. Generally, the shelf life of liquid form is 6 months at -20°C/-80°C. The shelf life of lyophilized form is 12 months at -20°C/-80°C.
Uniprot No.	P48048
Alias	ATP-regulated potassium channel ROM-K Inward rectifier K(+) channel Kir1.1;Potassium channel, inwardly rectifying subfamily J member 1
Product Type	Recombinant Protein
Immunogen Species	Homo sapiens (Human)
Purity	Greater than 90% as determined by SDS-PAGE.
Sequence	ILAKISRPKKRAKTITFSKNAVISKRGGKLCLLIRVANLRKSLIGSHIYGKLLKTT VTPEGETIILDQININFVVDAGNENLFFISPLTIYHVIDHNSPFFHMAAETLLQQDF ELVVFLDGTVESTSATCQVRTSYVPEEVLWGYRFAPIVSKTKEGKYRVDFHNF SKTVEVETPHCAMCLYNEKDVRARMKRGYDNPINFILSEVNETDDTKM
Research Area	Signal Transduction
Source	Yeast
Target Names	KCNJ1
Protein Names	Recommended name: ATP-sensitive inward rectifier potassium channel 1 Alternative name(s): ATP-regulated potassium channel ROM-K Inward rectifier K(+) channel Kir1.1 Potassium channel, inwardly rectifying subfamily J member 1
Expression Region	178-391aa
Notes	Repeated freezing and thawing is not recommended. Store working aliquots at 4°C for up to one week.
Tag Info	N-terminal 6xHis-tagged
Mol. Weight	26.3kDa

**Protein Length****Cytoplasmic Domain****Image**

(Tris-Glycine gel) Discontinuous SDS-PAGE (reduced) with 5% enrichment gel and 15% separation gel.

Reconstitution

We recommend that this vial be briefly centrifuged prior to opening to bring the contents to the bottom. Please reconstitute protein in deionized sterile water to a concentration of 0.1-1.0 mg/mL. We recommend to add 5-50% of glycerol (final concentration) and aliquot for long-term storage at -20°C/-80°C. Our default final concentration of glycerol is 50%. Customers could use it as reference.

Shelf Life

The shelf life is related to many factors, storage state, buffer ingredients, storage temperature and the stability of the protein itself. Generally, the shelf life of liquid form is 6 months at -20°C/-80°C. The shelf life of lyophilized form is 12 months at -20°C/-80°C.