



Recombinant Human Leucine-rich repeat-containing G-protein coupled receptor 5 (LGR5), partial

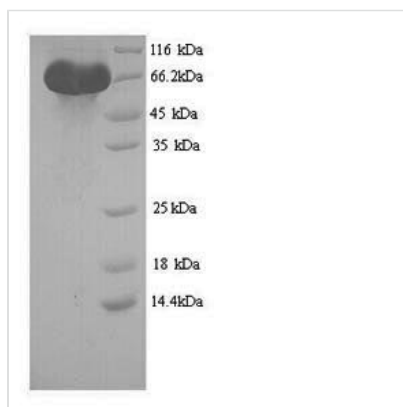
Product Code	CSB-YP012906HU
Relevance	Receptor for R-spondins that potentiates the canonical Wnt signaling pathway and acts as a st cell marker of the intestinal epithelium and the hair follicle. Upon binding to R-spondins (RSPO1, RSPO2, RSPO3 or RSPO4), associates with phosphorylated LRP6 and frizzled receptors that are activated by Extracellular domain Wnt receptors, triggering the canonical Wnt signaling pathway to increase expression of target genes. In contrast to classical G-protein coupled receptors, does not activate heterotrimeric G-proteins to transduce the signal. Involved in the development and/or maintenance of the adult intestinal st cells during postbryonic development.
Abbreviation	Recombinant Human LGR5 protein, partial
Storage	The shelf life is related to many factors, storage state, buffer ingredients, storage temperature and the stability of the protein itself. Generally, the shelf life of liquid form is 6 months at -20°C/-80°C. The shelf life of lyophilized form is 12 months at -20°C/-80°C.
Uniprot No.	O75473
Alias	G-protein coupled receptor 49G-protein coupled receptor 67G-protein coupled receptor HG38
Product Type	Recombinant Protein
Immunogen Species	Homo sapiens (Human)
Purity	Greater than 90% as determined by SDS-PAGE.
Sequence	GSSPRSGVLLRGCPHCHCEPDGRMLLRVDCSDLGLSELPSNLSVFTSYLDL SMNNISQLLPNPLPSLRFLEELRLAGNALTYPKGAFTGLYSLKVLMLQNNQLR HVPTEALQNLRSLSRLDANHISYVPPSCFSGLHSLRHLWLDDNALTEIPVQA FRSLALQAMTLALNKIHHIPDYAFGNLSSLVVLHHLHNNRIHSLGKKCFDGLHSL ETLDLNYNNLDEFPTAIRTLNLKELGFHSSNIRSIPEKAFVGNPSLITIHFYDNP QFVGRSAFQHLPELRTLTLNGASQITEFPDLTGTANLESLTLTGAQISSLPQTV CNQLPNLQVLDLSYNLLEDLPSFSVCQKQKIDLRHNEIYEIKVDTFQQLLSLRS LNLAWNKIAIHPNAFSTLPSLIKLDLSSNLLSSFPITGLHGLTHLKLGTGNHALQSL ISSENFPELKVIEMPYAYQCCAFGVCENAYKISNQWNKGDNSSMDDLHKKDA GMFQAQDERDLEDFLDFEEDLKALHSVQCSPSPGPFKPEHLLDGWLIR
Research Area	Cancer
Source	Yeast
Target Names	LGR5
Protein Names	Recommended name: Leucine-rich repeat-containing G-protein coupled receptor 5 Alternative name(s): G-protein coupled receptor 49 G-protein coupled



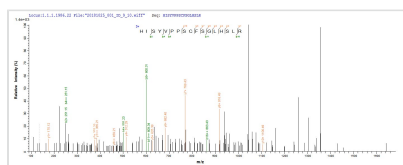
receptor 67 G-protein coupled receptor HG38

Expression Region	22-561aa
Notes	Repeated freezing and thawing is not recommended. Store working aliquots at 4°C for up to one week.
Tag Info	N-terminal 6xHis-tagged
Mol. Weight	62.4kDa
Protein Length	Partial

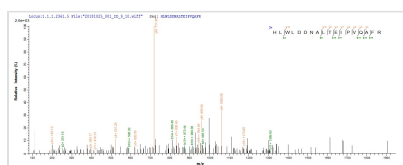
Image



(Tris-Glycine gel) Discontinuous SDS-PAGE (reduced) with 5% enrichment gel and 15% separation gel.



Based on the SEQUEST from database of Yeast host and target protein, the LC-MS/MS Analysis result of CSB-YP012906HU could indicate that this peptide derived from Yeast-expressed Homo sapiens (Human) LGR5.



Based on the SEQUEST from database of Yeast host and target protein, the LC-MS/MS Analysis result of CSB-YP012906HU could indicate that this peptide derived from Yeast-expressed Homo sapiens (Human) LGR5.

Reconstitution

We recommend that this vial be briefly centrifuged prior to opening to bring the contents to the bottom. Please reconstitute protein in deionized sterile water to a concentration of 0.1-1.0 mg/mL. We recommend to add 5-50% of glycerol (final concentration) and aliquot for long-term storage at -20°C/-80°C. Our default final concentration of glycerol is 50%. Customers could use it as reference.

Shelf Life

The shelf life is related to many factors, storage state, buffer ingredients, storage temperature and the stability of the protein itself. Generally, the shelf life of liquid form is 6 months at -20°C/-80°C. The shelf life of lyophilized form is 12 months at -20°C/-80°C.