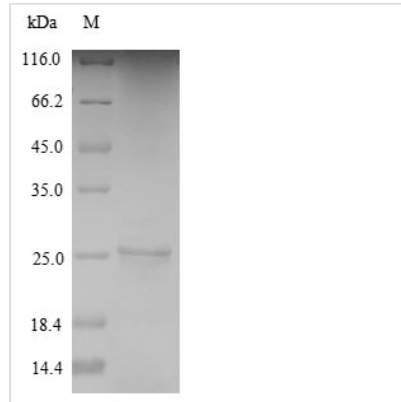




Recombinant Toxoplasma gondii Dense granule protein 1 (GRA1)

Product Code	CSB-YP319538TOV
Abbreviation	Recombinant Toxoplasma gondii GRA1 protein
Storage	The shelf life is related to many factors, storage state, buffer ingredients, storage temperature and the stability of the protein itself. Generally, the shelf life of liquid form is 6 months at -20°C/-80°C. The shelf life of lyophilized form is 12 months at -20°C/-80°C.
Uniprot No.	P13403
Alias	Major antigen p24
Product Type	Recombinant Protein
Immunogen Species	Toxoplasma gondii
Purity	≥ 90% as determined by SDS-PAGE.
Sequence	AEGGDNQSSAVSDRASLFGLLSGGTGQGLGIGESVDLEMMGNTYRVERPTG NPDLLKIAIKASDGSYSEVGNVNVVEEVIDTMKSMQRDEDIFLRALNKGETVEEAI EDVAQAEGLNSEQTLQLEDAVSAVASVVQDEMVIDDVQQLKDKQQLKDDI GFLTGERE
Research Area	Others
Source	Yeast
Target Names	GRA1
Protein Names	Recommended name: Dense granule protein 1 Short name= Protein GRA 1 Alternative name(s): Major antigen p24
Expression Region	25-190aa
Notes	Repeated freezing and thawing is not recommended. Store working aliquots at 4°C for up to one week.
Tag Info	N-terminal 6xHis-tagged
Mol. Weight	19.9kDa
Protein Length	Full Length of Mature Protein
Image	



(Tris-Glycine gel) Discontinuous SDS-PAGE (reduced) with 5% enrichment gel and 15% separation gel.

Reconstitution

We recommend that this vial be briefly centrifuged prior to opening to bring the contents to the bottom. Please reconstitute protein in deionized sterile water to a concentration of 0.1-1.0 mg/mL. We recommend to add 5-50% of glycerol (final concentration) and aliquot for long-term storage at $-20^{\circ}\text{C}/-80^{\circ}\text{C}$. Our default final concentration of glycerol is 50%. Customers could use it as reference.

Shelf Life

The shelf life is related to many factors, storage state, buffer ingredients, storage temperature and the stability of the protein itself.

Generally, the shelf life of liquid form is 6 months at $-20^{\circ}\text{C}/-80^{\circ}\text{C}$. The shelf life of lyophilized form is 12 months at $-20^{\circ}\text{C}/-80^{\circ}\text{C}$.