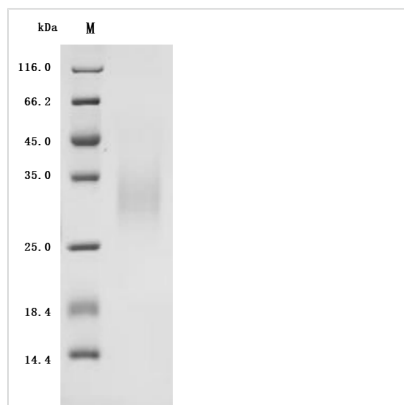


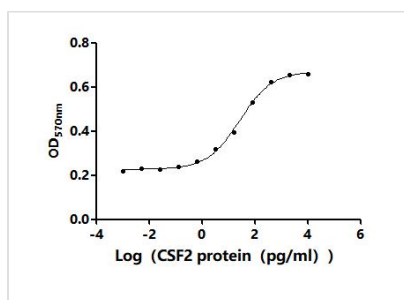


Recombinant Human Granulocyte-macrophage colony-stimulating factor (CSF2) (Active)

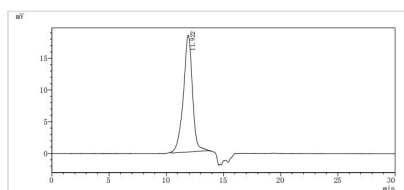
Product Code	CSB-YP006045HU
Abbreviation	Recombinant Human CSF2 protein (Active)
Storage	The shelf life is related to many factors, storage state, buffer ingredients, storage temperature and the stability of the protein itself. Generally, the shelf life of liquid form is 6 months at -20°C/-80°C. The shelf life of lyophilized form is 12 months at -20°C/-80°C.
Uniprot No.	P04141
Form	Lyophilized powder
Storage Buffer	Lyophilized from a 0.2 µm filtered PBS, 6% Trehalose, pH 7.4
Product Type	Recombinant Protein
Immunogen Species	Homo sapiens (Human)
Biological Activity	The ED50 as determined by the dose-dependent stimulation of the proliferation of human TF-1 cells is 21.07-35.48 pg/mL.
Purity	Greater than 95% as determined by SDS-PAGE. Greater than 95% as determined by SEC-HPLC.
Sequence	APARSPSPSTQPWEHVNAIQEARRLLNLSRDAAEMNETVEVISEMFDLQEPT CLQTRLELYKQGLRGLSLTKLKGPLTMMASHYKQHCPPTPETSCATQIITFESFK ENLKDFLLVIPFDCWEPVQE
Source	Yeast
Target Names	CSF2
Expression Region	18-144aa
Notes	Repeated freezing and thawing is not recommended. Store working aliquots at 4°C for up to one week.
Tag Info	N-terminal 6xHis-tagged
Mol. Weight	17.1 kDa
Protein Length	Full Length of Mature Protein
Image	



(Tris-Glycine gel) Discontinuous SDS-PAGE (reduced) with 5% enrichment gel and 15% separation gel.



Activity
The ED₅₀ as determined by the dose-dependent stimulation of the proliferation of human TF-1 cells is 21.07-35.48 pg/mL.



The purity of CSF2 was greater than 95% as determined by SEC-HPLC

Endotoxin

Less than 1.0 EU/ug as determined by LAL method.

Reconstitution

We recommend that this vial be briefly centrifuged prior to opening to bring the contents to the bottom. Please reconstitute protein in deionized sterile water to a concentration of 0.1-1.0 mg/mL. We recommend to add 5-50% of glycerol (final concentration) and aliquot for long-term storage at -20°C/-80°C. Our default final concentration of glycerol is 50%. Customers could use it as reference.

Shelf Life

The shelf life is related to many factors, storage state, buffer ingredients, storage temperature and the stability of the protein itself. Generally, the shelf life of liquid form is 6 months at -20°C/-80°C. The shelf life of lyophilized form is 12 months at -20°C/-80°C.