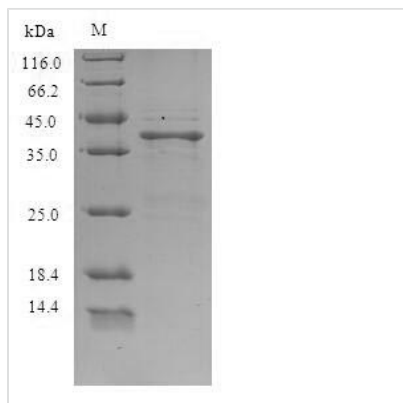




# Recombinant *Lithobates catesbeiana* Saxiphilin, partial

<b>Product Code</b>	CSB-YP339158LQA
<b>Relevance</b>	Binds specifically to the neurotoxin saxitoxin. Its physiological role may be to transport or sequester an endogenous organic molecule other than Fe <sup>3+</sup> . It may participate in a detoxification mechanism for neutralizing a microbial toxin.
<b>Storage</b>	The shelf life is related to many factors, storage state, buffer ingredients, storage temperature and the stability of the protein itself. Generally, the shelf life of liquid form is 6 months at -20°C/-80°C. The shelf life of lyophilized form is 12 months at -20°C/-80°C.
<b>Uniprot No.</b>	P31226
<b>Alias</b>	SAX
<b>Product Type</b>	Recombinant Protein
<b>Immunogen Species</b>	<i>Lithobates catesbeiana</i> (American bullfrog) ( <i>Rana catesbeiana</i> )
<b>Purity</b>	≥ 90% as determined by SDS-PAGE.
<b>Sequence</b>	AHLPSKNKVRWCTINKLEMKCDDWSAVSGGAIACTEASCPKGCVKQILKGE ADAVKLEVQYMYEALMCGLLPAVEEYHNKDDFGPCKTPGSPYDFGTLRAVA LVKKSNDINWNNIKGKKSCHTGVGDIAGWVIVSLIRRQNDNSDIDSFFGESC APGSDTKSNLCKLCIGDPKNSAANTKCSLSDKEAYYGNQGAFRCLVEKGDVA FVPHTVVFENTDGKNPAVWAKNLKSEDFELLCLDGSRAPVSNYKSKLSGIPP PAIVTREESISDVVRIVANQQSLYGRKGFEDMFQLFSSNKGNNLLFNDNTQC LITFDRQPKDIMEDYFGKPYTTVYGASRSAMSSSELISACTIKHC
<b>Research Area</b>	Others
<b>Source</b>	Yeast
<b>Expression Region</b>	484-844aa
<b>Notes</b>	Repeated freezing and thawing is not recommended. Store working aliquots at 4°C for up to one week.
<b>Tag Info</b>	N-terminal 6xHis-tagged
<b>Mol. Weight</b>	41.7kDa
<b>Protein Length</b>	Partial
<b>Image</b>	



(Tris-Glycine gel) Discontinuous SDS-PAGE (reduced) with 5% enrichment gel and 15% separation gel.

## Reconstitution

We recommend that this vial be briefly centrifuged prior to opening to bring the contents to the bottom. Please reconstitute protein in deionized sterile water to a concentration of 0.1-1.0 mg/mL. We recommend to add 5-50% of glycerol (final concentration) and aliquot for long-term storage at  $-20^{\circ}\text{C}/-80^{\circ}\text{C}$ . Our default final concentration of glycerol is 50%. Customers could use it as reference.

## Shelf Life

The shelf life is related to many factors, storage state, buffer ingredients, storage temperature and the stability of the protein itself. Generally, the shelf life of liquid form is 6 months at  $-20^{\circ}\text{C}/-80^{\circ}\text{C}$ . The shelf life of lyophilized form is 12 months at  $-20^{\circ}\text{C}/-80^{\circ}\text{C}$ .