

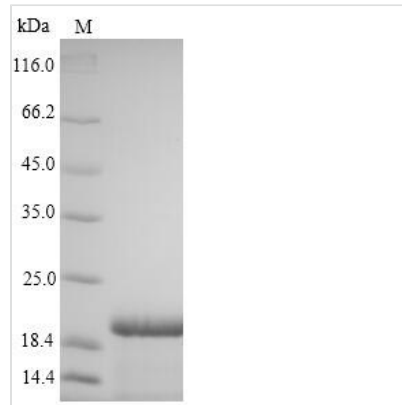


# Recombinant Hepatitis B virus genotype C subtype adr Large envelope protein (S), partial

<b>Product Code</b>	CSB-YP335673HEC
<b>Relevance</b>	The large envelope protein exists in two topological conformations, one which is termed 'external' or Le-HBsAg and the other 'internal' or Li-HBsAg. In its external conformation the protein attaches the virus to cell receptors and thereby initiating infection. This interaction determines the species specificity and liver tropism. This attachment induces virion internalization predominantly through caveolin-mediated endocytosis. The large envelope protein also assumes fusion between virion membrane and endosomal membrane (Probable). In its internal conformation the protein plays a role in virion morphogenesis and mediates the contact with the nucleocapsid like a matrix protein (By similarity).
<b>Storage</b>	The shelf life is related to many factors, storage state, buffer ingredients, storage temperature and the stability of the protein itself. Generally, the shelf life of liquid form is 6 months at -20°C/-80°C. The shelf life of lyophilized form is 12 months at -20°C/-80°C.
<b>Uniprot No.</b>	P31868
<b>Product Type</b>	Recombinant Proteins
<b>Immunogen Species</b>	Hepatitis B virus genotype C subtype adr (isolate Japan/Nishioka/1983) (HBV-C)
<b>Purity</b>	≥ 90% as determined by SDS-PAGE.
<b>Sequence</b>	GGWSSKPRQGMGTNLSVPNPLGFFPDHQLDPAFGANSNPDWDFNPNKDH WPEANQVGVGTFGPGFTPPHGGLLGWSPQAQGILTTVPAAPPPASTNRQSG RQPTISPPLRDSHPQAMQWNSTTFHQALLDPRVRGLYFPAGGSSSGTVNPV PTTASPISSIFSRTGDPAPNMENTTSG
<b>Research Area</b>	Microbiology
<b>Source</b>	Yeast
<b>Target Names</b>	S
<b>Protein Names</b>	Recommended name: Large envelope protein Alternative name(s): L glycoprotein L-HBsAg Short name= LHB Large S protein Large surface protein Major surface antigen
<b>Expression Region</b>	2-181aa
<b>Notes</b>	Repeated freezing and thawing is not recommended. Store working aliquots at 4°C for up to one week.
<b>Tag Info</b>	N-terminal 6xHis-tagged
<b>Mol. Weight</b>	20.9kDa
<b>Protein Length</b>	Partial



## Image



(Tris-Glycine gel) Discontinuous SDS-PAGE (reduced) with 5% enrichment gel and 15% separation gel.

## Shelf Life

The shelf life is related to many factors, storage state, buffer ingredients, storage temperature and the stability of the protein itself.

Generally, the shelf life of liquid form is 6 months at -20°C/-80°C. The shelf life of lyophilized form is 12 months at -20°C/-80°C.