



Recombinant Rat Neuroendocrine convertase 1 (Pcsk1)

| | |
|--------------------------|-----------------------------------------------------------------------------------------------------------------------------------------------------------------------------------------------------------------------------------------------------------------------------------------------------------------------------------------------------------------------------------------------------------------------------------------------------------------------------------------------------------------------------------------------------------------------------------------------------------------------------------------------------------------------------------------------------------------|
| Product Code | CSB-YP017640RA |
| Relevance | Involved in the processing of hormone and other protein precursors at sites comprised of pairs of basic amino acid residues. Substrates include POMC, renin, enkephalin, dynorphin, somatostatin, insulin and AGRP. |
| Abbreviation | Recombinant Rat Pcsk1 protein |
| Storage | The shelf life is related to many factors, storage state, buffer ingredients, storage temperature and the stability of the protein itself. Generally, the shelf life of liquid form is 6 months at -20°C/-80°C. The shelf life of lyophilized form is 12 months at -20°C/-80°C. |
| Uniprot No. | P28840 |
| Alias | NEC 1 Alternative name(s): Prohormone convertase 1 Proprotein convertase 1 Short name: PC1 |
| Product Type | Recombinant Protein |
| Immunogen Species | Rattus norvegicus (Rat) |
| Purity | Greater than 90% as determined by SDS-PAGE. |
| Sequence | SVPRDSALNLFNDPMMWNQQWYLQDTRMTASLPKLDLHVIPVWQKGITGKGVV ITVLDDGLEWNHTDIYANYDPEASYDFNDNDHDPFPRYDPTNENKHGTRCAG EIAMQANNHKCGVGVAYNSKVGIRMLDGIIVTDAIEASSIGFNPGHVDIYSASW GPNDDGKTVEGPGRLAQAFAFEYGVKQGRQGGKGSIFVWASGNNGRQGDNCD CDGYTDSIYTISSASQQGLSPWYAEKCSSTLATSYSYSSGDYTDQRITSADLHN DCTETHTGTSASAPLAAGIFALALEANPNLTWRDMQHLVVWTSEYDPLANNP GWKKNAGLMVNSRFGFLLNAKALVDLADPRTWRNVPEKKECIKDNNFEP RALKANGEVIVEIPTRACEGQENAINSLHVQFEATIEYSRRGLHVTLTSAAG TSTVLLAERERDTSPNGFKNWDFMSVHTWGENPVGWTLKVTDMMSGRMQN EGRIVNWKLILHGTSSQPEHMKQPRVYTSYNTVQNDRRGVEKMMVNVVEEKPT QNSLNGNLLVPKNSSSSSVEDRRDEQVQGAPSKAMLRLLQSAFSKNTPSKQS SKIPSAKLSVPYEGLYEALEKLNKPSQLEDSLSDYVDVVFYNTKPKYKHRD DRLLQALMDILNEKN |
| Research Area | Signal Transduction |
| Source | Yeast |
| Target Names | Pcsk1 |
| Protein Names | Recommended name: Neuroendocrine convertase 1 Short name= NEC 1 EC= 3.4.21.93 Alternative name(s): Prohormone convertase 1 Proprotein convertase 1 Short name= PC1 |
| Expression Region | 111-752aa |
| Notes | Repeated freezing and thawing is not recommended. Store working aliquots at 4°C for up to one week. |

**Tag Info**

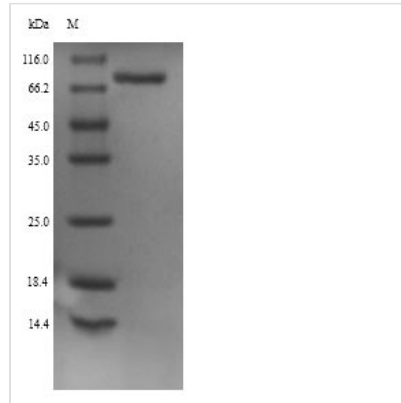
N-terminal 6xHis-tagged

Mol. Weight

73.2kDa

Protein Length

Full Length of Mature Protein

Image

(Tris-Glycine gel) Discontinuous SDS-PAGE (reduced) with 5% enrichment gel and 15% separation gel.

Reconstitution

We recommend that this vial be briefly centrifuged prior to opening to bring the contents to the bottom. Please reconstitute protein in deionized sterile water to a concentration of 0.1-1.0 mg/mL. We recommend to add 5-50% of glycerol (final concentration) and aliquot for long-term storage at -20°C/-80°C. Our default final concentration of glycerol is 50%. Customers could use it as reference.

Shelf Life

The shelf life is related to many factors, storage state, buffer ingredients, storage temperature and the stability of the protein itself.

Generally, the shelf life of liquid form is 6 months at -20°C/-80°C. The shelf life of lyophilized form is 12 months at -20°C/-80°C.