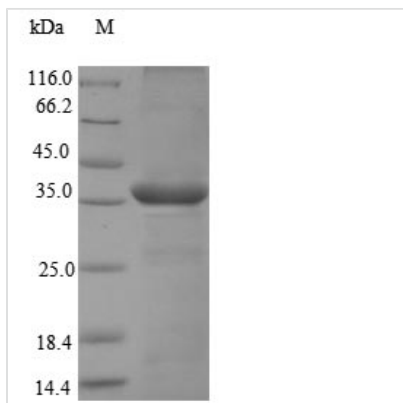




Recombinant *Macaca fascicularis* Chymase (CMA1)

Product Code	CSB-EP005599MOV
Relevance	Major secreted protease of mast cells with suspected roles in vasoactive peptide generation, Extracellular domain matrix degradation, and regulation of gland secretion.
Abbreviation	Recombinant Cynomolgus monkey CMA1 protein
Storage	The shelf life is related to many factors, storage state, buffer ingredients, storage temperature and the stability of the protein itself. Generally, the shelf life of liquid form is 6 months at -20°C/-80°C. The shelf life of lyophilized form is 12 months at -20°C/-80°C.
Uniprot No.	P56435
Alias	Alpha-chymase
Product Type	Recombinant Protein
Immunogen Species	<i>Macaca fascicularis</i> (Crab-eating macaque) (Cynomolgus monkey)
Purity	≥ 90% as determined by SDS-PAGE.
Sequence	IIGGTECKPHSRPYMAYLEIVTSNGPSKSCGGFLIRRNFLVLTAVHCAGRSITVTL GAHNITEKEDTWQKLEVIKQFRHPKYNTSTLHHDIMLLKLKEKASLTAVGTLPLF PSQFNFPVPPGRMCRVAGWGRTGVLPKGSDDLQEVKLRMLMDPQACSHFRYFD HNLQLCVGNPRKTKSAFKGDSGGPLLCAGVAQGIVSYGRLLDAKPPAVFTRISH YRPWINKILQAN
Research Area	Others
Source	<i>E.coli</i>
Target Names	CMA1
Protein Names	Recommended name: Chymase EC= 3.4.21.39 Alternative name(s): Alpha-chymase
Expression Region	22-247aa
Notes	Repeated freezing and thawing is not recommended. Store working aliquots at 4°C for up to one week.
Tag Info	N-terminal 6xHis-SUMO-tagged
Mol. Weight	41.1kDa
Protein Length	Full Length of Mature Protein
Image	



(Tris-Glycine gel) Discontinuous SDS-PAGE (reduced) with 5% enrichment gel and 15% separation gel.

Reconstitution

We recommend that this vial be briefly centrifuged prior to opening to bring the contents to the bottom. Please reconstitute protein in deionized sterile water to a concentration of 0.1-1.0 mg/mL. We recommend to add 5-50% of glycerol (final concentration) and aliquot for long-term storage at -20°C/-80°C. Our default final concentration of glycerol is 50%. Customers could use it as reference.

Shelf Life

The shelf life is related to many factors, storage state, buffer ingredients, storage temperature and the stability of the protein itself. Generally, the shelf life of liquid form is 6 months at -20°C/-80°C. The shelf life of lyophilized form is 12 months at -20°C/-80°C.