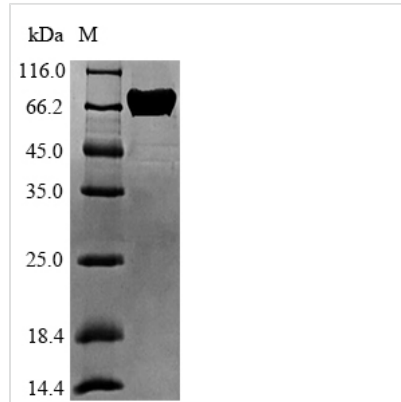


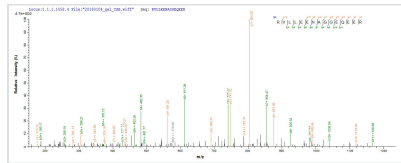


Recombinant Arachis hypogaea Allergen Ara h 1, clone P17

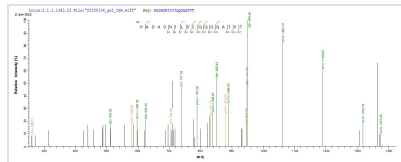
Product Code	CSB-EP331779ANE(A4)
Abbreviation	Recombinant Arachis hypogaea Allergen Ara h 1, clone P17 protein
Storage	The shelf life is related to many factors, storage state, buffer ingredients, storage temperature and the stability of the protein itself. Generally, the shelf life of liquid form is 6 months at -20°C/-80°C. The shelf life of lyophilized form is 12 months at -20°C/-80°C.
Uniprot No.	P43237
Alias	Allergen Ara h I
Product Type	Recombinant Protein
Immunogen Species	Arachis hypogaea (Peanut)
Purity	Greater than 90% as determined by SDS-PAGE.
Sequence	KSPYRK TENPCAQRCLQSCQQEPDDLKQKACESRCKLEYDPRCVYDTGAT NQRHPPGERTRGRQPGDYDDRRQPRREEGGRWGPAEPREREREEDWRQ PREDWRRPSHQQPRKIRPEGREGEQEWTGPGSEVREETSRRNPFYFPSRRF STRYGNQNGRIRVLQRFDQRSKQFQNLQNRHVQIEARPNTLVLPKHADADNI LVIQQGQATVTVANGNNRKSFNLDEGHALRIPSGFISYILNRHDNQNLRVAKIS MPVNTPGQFEDFFPASSRDQSSYLQGF SRNTLEAAFNAEFNEIRRVLLEENAG GEQEERGQRRRSTRSSDNEG VIVKVSKEHVQELTKHAKSVSKKGSEEEEDITN PINLRDGE PDLSNNFGRLFEVKPKKPNQLQDLDMMLTCVEIKEGALMLPHFN SKAMVIVVVNKG TGNLELVAVRKEQQQRGRREQEWEEEEEEDEEEEGSNREV RRYTARLKEGDVFIMPAAHPVAINASSELHLLGFGINAENHRIFLAGDKDNVID QIEKQAKDLAFPGSGEQVEKLIKNQRESHFVSARPQSQSPSSPEKEDQEEEN QGGKGPLLSILKAFN
Research Area	Allergen
Source	E.coli
Expression Region	26-614aa
Notes	Repeated freezing and thawing is not recommended. Store working aliquots at 4°C for up to one week.
Tag Info	N-terminal 6xHis-tagged
Mol. Weight	71.7kDa
Protein Length	Full Length of Mature Protein
Image	



(Tris-Glycine gel) Discontinuous SDS-PAGE (reduced) with 5% enrichment gel and 15% separation gel.



Based on the SEQUEST from database of E.coli host and target protein, the LC-MS/MS Analysis result of CSB-EP331779ANE(A4) could indicate that this peptide derived from E.coli-expressed *Arachis hypogaea* (Peanut) N/A.



Based on the SEQUEST from database of E.coli host and target protein, the LC-MS/MS Analysis result of CSB-EP331779ANE(A4) could indicate that this peptide derived from E.coli-expressed *Arachis hypogaea* (Peanut) N/A.

Reconstitution

We recommend that this vial be briefly centrifuged prior to opening to bring the contents to the bottom. Please reconstitute protein in deionized sterile water to a concentration of 0.1-1.0 mg/mL. We recommend to add 5-50% of glycerol (final concentration) and aliquot for long-term storage at $-20^{\circ}\text{C}/-80^{\circ}\text{C}$. Our default final concentration of glycerol is 50%. Customers could use it as reference.

Shelf Life

The shelf life is related to many factors, storage state, buffer ingredients, storage temperature and the stability of the protein itself.

Generally, the shelf life of liquid form is 6 months at $-20^{\circ}\text{C}/-80^{\circ}\text{C}$. The shelf life of lyophilized form is 12 months at $-20^{\circ}\text{C}/-80^{\circ}\text{C}$.