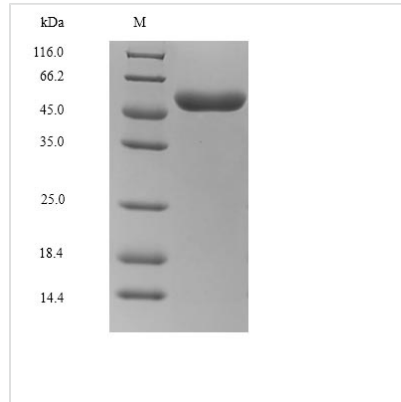


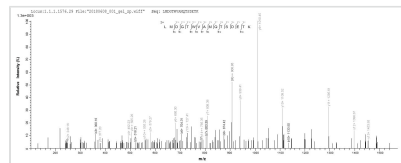


# Recombinant Rabies virus Glycoprotein (G), partial

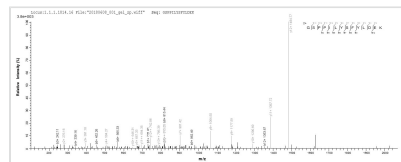
<b>Product Code</b>	CSB-BP325676RAF
<b>Relevance</b>	Attaches the virus to host cellular receptor, inducing endocytosis of the virion. In the endosome, the acidic pH induces conformational changes in the glycoprotein trimer, which trigger fusion between virus and cell membrane. There is convincing in vitro evidence that the muscular form of the nicotinic acetylcholine receptor (nAChR), the neuronal cell adhesion molecule (NCAM), and the p75 neurotrophin receptor (p75NTR) bind glycoprotein and thereby facilitate rabies virus entry into cells (By similarity).
<b>Abbreviation</b>	Recombinant Rabies virus Glycoprotein, partial
<b>Storage</b>	The shelf life is related to many factors, storage state, buffer ingredients, storage temperature and the stability of the protein itself. Generally, the shelf life of liquid form is 6 months at -20°C/-80°C. The shelf life of lyophilized form is 12 months at -20°C/-80°C.
<b>Uniprot No.</b>	P19462
<b>Product Type</b>	Recombinant Protein
<b>Immunogen Species</b>	Rabies virus (strain HEP-Flury) (RABV)
<b>Purity</b>	Greater than 85% as determined by SDS-PAGE.
<b>Sequence</b>	KFPIYTIPDKLGPWSPIDLHHLSCPNLVEDEGCTNLSGFSYMELKVGYISAIAIK VNGFTCTGVVTEAETYTNFVGIVTTTTFKRKHFRPTPDACRAAYNWKMAGDPR YEESLHNPYPDYHWRVKTTKESLVIISPSVTDLDPYDKSLHSRVFPGGNCSS GITVSSSTYCSSTNHDYTIWMPENLRLGTSCDIFTHSRGKRASKGDKTCGFVDER GLYKSLKGACKLKLKCGVLGLRLMDGTWVAMQTSDETKWCPPGQLVNLHDFR SDEIEHLVEEELVKKREECLDALESIMTTKSVSFRRLSHLRKLVPGFGKAYTIFN KTLMEADAHYKSVQTWNEIIPSKGCLRVGERCHPHVNGVFFNGIILGSDGHVLI PEMQSSLLQQHMELLESSVIPLMHPLADPSTVFKDGDVEVDFVEVHLPDVHKQ VSGVDLGLPKWGKY
<b>Research Area</b>	Microbiology
<b>Source</b>	Baculovirus
<b>Target Names</b>	G
<b>Expression Region</b>	20-459aa
<b>Notes</b>	Repeated freezing and thawing is not recommended. Store working aliquots at 4°C for up to one week.
<b>Tag Info</b>	C-terminal 9xHis tagged
<b>Mol. Weight</b>	51.5 kDa
<b>Protein Length</b>	Partial
<b>Image</b>	



(Tris-Glycine gel) Discontinuous SDS-PAGE (reduced) with 5% enrichment gel and 15% separation gel.



Based on the SEQUEST from database of Baculovirus host and target protein, the LC-MS/MS Analysis result of CSB-BP325676RAF could indicate that this peptide derived from Baculovirus-expressed Rabies virus (strain HEP-Flury) (RABV) G.



Based on the SEQUEST from database of Baculovirus host and target protein, the LC-MS/MS Analysis result of CSB-BP325676RAF could indicate that this peptide derived from Baculovirus-expressed Rabies virus (strain HEP-Flury) (RABV) G.

## Reconstitution

We recommend that this vial be briefly centrifuged prior to opening to bring the contents to the bottom. Please reconstitute protein in deionized sterile water to a concentration of 0.1-1.0 mg/mL. We recommend to add 5-50% of glycerol (final concentration) and aliquot for long-term storage at -20°C/-80°C. Our default final concentration of glycerol is 50%. Customers could use it as reference.

## Shelf Life

The shelf life is related to many factors, storage state, buffer ingredients, storage temperature and the stability of the protein itself.

Generally, the shelf life of liquid form is 6 months at -20°C/-80°C. The shelf life of lyophilized form is 12 months at -20°C/-80°C.