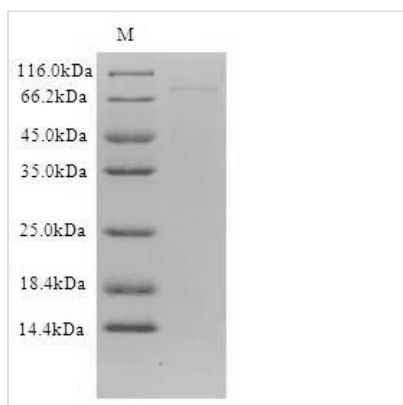




Recombinant Human mRNA-decapping enzyme 1B (DCP1B)

Product Code	CSB-CF811635HU
Relevance	May play a role in the degradation of mRNAs, both in normal mRNA turnover and in nonsense-mediated mRNA decay. May remove the 7-methyl guanine cap structure from mRNA molecules, yielding a 5'-phosphorylated mRNA fragment and 7m-GDP (By similarity)
Abbreviation	Recombinant Human DCP1B protein
Storage	The shelf life is related to many factors, storage state, buffer ingredients, storage temperature and the stability of the protein itself. Generally, the shelf life of liquid form is 6 months at -20°C/-80°C. The shelf life of lyophilized form is 12 months at -20°C/-80°C.
Uniprot No.	Q8IZD4
Product Type	Transmembrane Protein
Immunogen Species	Homo sapiens (Human)
Purity	Greater than 90% as determined by SDS-PAGE.
Sequence	AAVAAGGLVGKGRDISLAALQRHDPYINRIVDVASQVALYTFGHRANEWEKTD VEGTLFVYTRSASPKHGFTIMNRLSMENRTEPITKDLDFQLQDPFLLYRNARLS IYGIWFYDKEECQRIAELMKNLTQYEQLKAHQGTGAGISPVILNSGEGKEVDIL RMLIAKDEYTKCKTCSEPKKITSSSAIYDNPNIKIPVKPSENQQQRIPQPNQ TLDPEPQHLSLTALFGKQDKATCQETVEPPQTLHQQQQQQQQQQEKLPQRQ VVRSLSYEEP RRHSPPIEKQLCPAIQKLMVRSADLHPLSELPENRPCENGSTH SAGEFFTGPVQPGSPHNIGTSRGVQNASRTQNLFEKLQSTPGAANKCDPSTP APASSAALNRSRAPT SVTPVAPGKGLAQP PQAYFNGSLPPQTVGHQAHGREGRE QSTLPRQTLPISGSQTGSSGVISPQELLKQLQIVQQEQQLHASNRPALAAKFPV LAQSSGTGKPLESWINKTPNTEQQTPLFQVISPQRIPATAAPSLLMSPMVFAQP TSVPPKERESGLLPVGGQEP PAAATSLLLPIQSPEPSVITSSPLTKLQLQEALLY LIQNDDNFLNIIYEAYLFSMTQAAMKKT M
Research Area	Epigenetics and Nuclear Signaling
Source	in vitro E.coli expression system
Target Names	DCP1B
Expression Region	2-617aa
Notes	Repeated freezing and thawing is not recommended. Store working aliquots at 4°C for up to one week.
Tag Info	N-terminal 6xHis-B2M-tagged
Mol. Weight	81.6kDa
Protein Length	Full Length of Mature Protein
Image	



(Tris-Glycine gel) Discontinuous SDS-PAGE (reduced) with 5% enrichment gel and 15% separation gel.

Reconstitution

We recommend that this vial be briefly centrifuged prior to opening to bring the contents to the bottom. Please reconstitute protein in deionized sterile water to a concentration of 0.1-1.0 mg/mL. We recommend to add 5-50% of glycerol (final concentration) and aliquot for long-term storage at $-20^{\circ}\text{C}/-80^{\circ}\text{C}$. Our default final concentration of glycerol is 50%. Customers could use it as reference.

Shelf Life

The shelf life is related to many factors, storage state, buffer ingredients, storage temperature and the stability of the protein itself. Generally, the shelf life of liquid form is 6 months at $-20^{\circ}\text{C}/-80^{\circ}\text{C}$. The shelf life of lyophilized form is 12 months at $-20^{\circ}\text{C}/-80^{\circ}\text{C}$.