

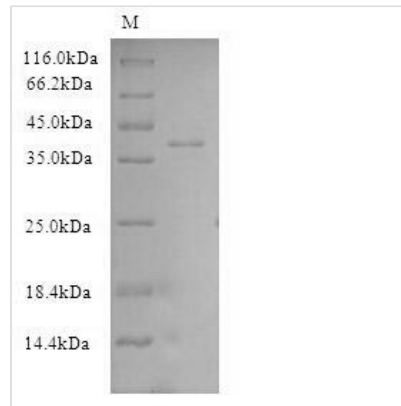


Recombinant Human Exportin-2 (CSE1L), partial

| | |
|--------------------------|--|
| Product Code | CSB-CF006042HU |
| Relevance | Export receptor for importin-alpha. Mediates importin-alpha re-export from the nucleus to the cytoplasm after import substrates (cargos) have been released into the nucleoplasm. In the nucleus binds cooperatively to importin-alpha and to the GTPase Ran in its active GTP-bound form. Docking of this trimeric complex to the nuclear pore complex (NPC) is mediated through binding to nucleoporins. Upon transit of a nuclear export complex into the cytoplasm, disassembling of the complex and hydrolysis of Ran-GTP to Ran-GDP (induced by RANBP1 and RANGAP1, respectively) cause release of the importin-alpha from the export receptor. CSE1L/XPO2 then return to the nuclear compartment and mediate another round of transport. The directionality of nuclear export is thought to be conferred by an asymmetric distribution of the GTP- and GDP-bound forms of Ran between the cytoplasm and nucleus |
| Abbreviation | Recombinant Human CSE1L protein, partial |
| Storage | The shelf life is related to many factors, storage state, buffer ingredients, storage temperature and the stability of the protein itself. Generally, the shelf life of liquid form is 6 months at -20°C/-80°C. The shelf life of lyophilized form is 12 months at -20°C/-80°C. |
| Uniprot No. | P55060 |
| Product Type | Transmembrane Protein |
| Immunogen Species | Homo sapiens (Human) |
| Purity | ≥ 90% as determined by SDS-PAGE. |
| Sequence | MELSDANLQTLTEYLKKTLDPPAIRRPAEKFLESVEGNQNYPLLLLTLLEKSQ DNVIKVCASVTFKNIKRNRWRIVEDEPNKICEADRVAIKANIVHMLSSPEQIQK QLSDAISIIIGREDFPQKWPDLLTEMVNRQSGDFHVGVLRTAHSFLKRYRHE FKSNELWTEIKLVLDALPLTNLFKATIELCSTHAN |
| Research Area | Cell Biology |
| Source | in vitro E.coli expression system |
| Target Names | CSE1L |
| Protein Names | Cellular apoptosis susceptibility protein Chromosome segregation 1-like protein Importin-alpha re-exporter |
| Expression Region | 1-200aa |
| Notes | Repeated freezing and thawing is not recommended. Store working aliquots at 4°C for up to one week. |
| Tag Info | N-terminal 6xHis-SUMO-tagged |
| Mol. Weight | 39.1kDa |
| Protein Length | Partial |



Image



(Tris-Glycine gel) Discontinuous SDS-PAGE (reduced) with 5% enrichment gel and 15% separation gel.

Reconstitution

We recommend that this vial be briefly centrifuged prior to opening to bring the contents to the bottom. Please reconstitute protein in deionized sterile water to a concentration of 0.1-1.0 mg/mL. We recommend to add 5-50% of glycerol (final concentration) and aliquot for long-term storage at -20°C/-80°C. Our default final concentration of glycerol is 50%. Customers could use it as reference.

Shelf Life

The shelf life is related to many factors, storage state, buffer ingredients, storage temperature and the stability of the protein itself.

Generally, the shelf life of liquid form is 6 months at -20°C/-80°C. The shelf life of lyophilized form is 12 months at -20°C/-80°C.