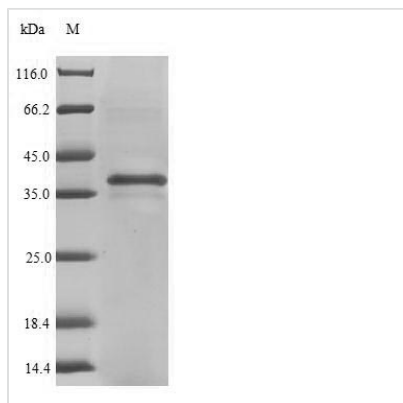




Recombinant Mouse Beta-tectorin (Tectb)

Product Code	CSB-CF023371MO
Relevance	One of the major non-collagenous components of the tectorial membrane (By similarity). The tectorial membrane is an extracellular matrix of the inner ear that covers the neuroepithelium of the cochlea and contacts the stereocilia bundles of specialized sensory hair cells. Sound induces movement of these hair cells relative to the tectorial membrane, deflects the stereocilia and leads to fluctuations in hair-cell membrane potential, transducing sound into electrical signals.
Abbreviation	Recombinant Mouse Tectb protein
Storage	The shelf life is related to many factors, storage state, buffer ingredients, storage temperature and the stability of the protein itself. Generally, the shelf life of liquid form is 6 months at -20°C/-80°C. The shelf life of lyophilized form is 12 months at -20°C/-80°C.
Uniprot No.	O08524
Product Type	Transmembrane Protein
Immunogen Species	Mus musculus (Mouse)
Purity	Greater than 90% as determined by SDS-PAGE.
Sequence	KSCTPNKADVILVFCYPKTIITKIPECPYGWEVHQLALGGLCYNGVHEGGYYQF VIPDLSPKNKSYCGTQSEYKPPIYHFYSHIVSNDSTVIVKNQPVNYSFSCITYHS TYLVNQAAFDQRVATVHVKNKSMGTFESQLSLNFYTNAKFSTKKEAPFVLETS EIGSDLFAGVEAKGLSVRFKVVNLNSCWATPSADFMYPQLQWQLINKGCPTDET LVHENGKDHRAFQFNAFRFQNIKLSKVWLHCETFICDSEKLSCPVNCDKRR RMLRDQTGGVLVVELSLRSRA
Research Area	others
Source	in vitro E.coli expression system
Target Names	Tectb
Expression Region	18-305aa
Notes	Repeated freezing and thawing is not recommended. Store working aliquots at 4°C for up to one week.
Tag Info	N-terminal 6xHis-tagged
Mol. Weight	36.5kDa
Protein Length	Full Length of Mature Protein
Image	



(Tris-Glycine gel) Discontinuous SDS-PAGE (reduced) with 5% enrichment gel and 15% separation gel.

Reconstitution

We recommend that this vial be briefly centrifuged prior to opening to bring the contents to the bottom. Please reconstitute protein in deionized sterile water to a concentration of 0.1-1.0 mg/mL. We recommend to add 5-50% of glycerol (final concentration) and aliquot for long-term storage at -20°C/-80°C. Our default final concentration of glycerol is 50%. Customers could use it as reference.

Shelf Life

The shelf life is related to many factors, storage state, buffer ingredients, storage temperature and the stability of the protein itself. Generally, the shelf life of liquid form is 6 months at -20°C/-80°C. The shelf life of lyophilized form is 12 months at -20°C/-80°C.