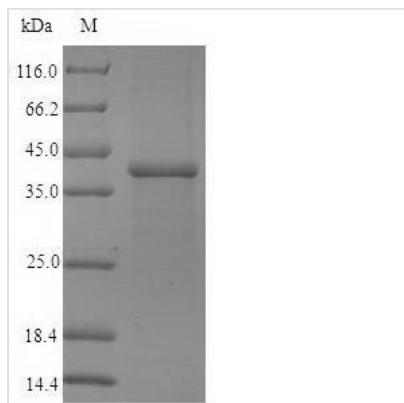




Recombinant Human Pulmonary surfactant-associated protein A1 (SFTPA1)

Product Code	CSB-CF810281HU
Relevance	In presence of calcium ions, it binds to surfactant phospholipids and contributes to lower the surface tension at the air-liquid interface in the alveoli of the mammalian lung and is essential for normal respiration.
Abbreviation	Recombinant Human SFTPA1 protein
Storage	The shelf life is related to many factors, storage state, buffer ingredients, storage temperature and the stability of the protein itself. Generally, the shelf life of liquid form is 6 months at -20°C/-80°C. The shelf life of lyophilized form is 12 months at -20°C/-80°C.
Uniprot No.	Q8IWL2
Product Type	Transmembrane Protein
Immunogen Species	Homo sapiens (Human)
Purity	≥ 90% as determined by SDS-PAGE.
Sequence	EVKDVCVCGSPGIPGTPGSHGLPGRDGRDGLKGDPPGPPGPMGPPGEMPCPP GNDGLPGAPGIPGECGEKGEPPGERGPPGLPAHLDEELQATLHDFRHQILQTR GALSLQGSIMTVGEKVFSSNGQSITFDAIQEACARAGGRIAVPRNPEENEAIAS FVKKYNTYAYVGLTEGSPGDFRYS DGTVPVNYTNWYRGEPAGRGKEQCVEM YTDGQWNRNCLYSRLTICEF
Research Area	Signal Transduction
Source	in vitro E.coli expression system
Target Names	SFTPA1
Protein Names	Collectin-4
Expression Region	21-248aa
Notes	Repeated freezing and thawing is not recommended. Store working aliquots at 4°C for up to one week.
Tag Info	N-terminal 10xHis-B2M-tagged and C-terminal Myc-tagged
Mol. Weight	41.2kDa
Protein Length	Full Length
Image	



(Tris-Glycine gel) Discontinuous SDS-PAGE (reduced) with 5% enrichment gel and 15% separation gel.

Reconstitution

We recommend that this vial be briefly centrifuged prior to opening to bring the contents to the bottom. Please reconstitute protein in deionized sterile water to a concentration of 0.1-1.0 mg/mL. We recommend to add 5-50% of glycerol (final concentration) and aliquot for long-term storage at $-20^{\circ}\text{C}/-80^{\circ}\text{C}$. Our default final concentration of glycerol is 50%. Customers could use it as reference.

Shelf Life

The shelf life is related to many factors, storage state, buffer ingredients, storage temperature and the stability of the protein itself. Generally, the shelf life of liquid form is 6 months at $-20^{\circ}\text{C}/-80^{\circ}\text{C}$. The shelf life of lyophilized form is 12 months at $-20^{\circ}\text{C}/-80^{\circ}\text{C}$.