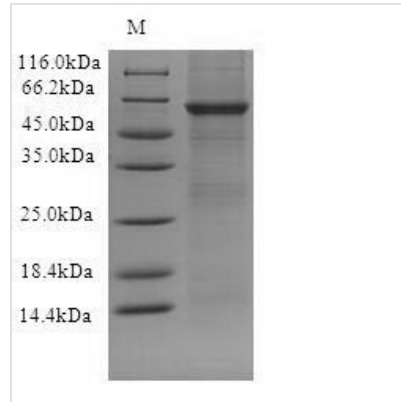




Recombinant Human Toll-like receptor 10 (TLR10), partial

Product Code	CSB-CF023600HU
Relevance	Participates in the innate immune response to microbial agents. Acts via MYD88 and TRAF6, leading to NF-kappa-B activation, cytokine secretion and the inflammatory response (By similarity)
Abbreviation	Recombinant Human TLR10 protein, partial
Storage	The shelf life is related to many factors, storage state, buffer ingredients, storage temperature and the stability of the protein itself. Generally, the shelf life of liquid form is 6 months at -20°C/-80°C. The shelf life of lyophilized form is 12 months at -20°C/-80°C.
Uniprot No.	Q9BXR5
Product Type	Transmembrane Protein
Immunogen Species	Homo sapiens (Human)
Purity	Greater than 90% as determined by SDS-PAGE.
Sequence	DAPELPEERELMTNCSNMSLRKVPADLTPATTTLDLSYNLLFQLQSSDFHSVS KLRVLILCHNRIQQLDLKTFEFNKELRYLDLSNNRLKSVTWYLLAGLRYLDLSFN DFDTMPICEEAGNMSHLEILGLSGAKIQKSDFQKIAHLHLNTVFLGFRTLPHYEE GSLPILNTTKLHIVLPMDTNFWVLLRDGIKTSKILEMTNIDGKSQFVSYEMQRNL SLENAKTSVLLLNKVDLLWDDLFLILQFVWHTSVEHFQIRNVTFGGKAYLDHNS FDYSNTVMRTIKLEHVHFRVFIYQQDKIYLLLTKMDIENLTISNAQMPHMLFPNY PTKFQYLNFAANNILTDELFRKTIQLPHLKTILNGNKLETLSLVSCFANNTPLEHL DLSQNLQHKNDENC SWPETVVMNLSYNKLSDSVFRCLPKSIQILD LNNNQI QTVPKETIHLMALRELNIAFNFLTDLPGCSHFSRSLSVLNIE MNFILSPSLDFVQS CQEVKTLNAGRNPFRCTCELKNFIQLETYSEVMVMVGWSDSYTCEYPLNLRGT RLKDVHLHELSCNT
Research Area	others
Source	in vitro E.coli expression system
Target Names	TLR10
Protein Names	CD_antigen: CD290
Expression Region	20-576aa
Notes	Repeated freezing and thawing is not recommended. Store working aliquots at 4°C for up to one week.
Tag Info	N-terminal 10xHis-tagged
Mol. Weight	68.1kDa
Protein Length	Partial
Image	



(Tris-Glycine gel) Discontinuous SDS-PAGE (reduced) with 5% enrichment gel and 15% separation gel.

Reconstitution

We recommend that this vial be briefly centrifuged prior to opening to bring the contents to the bottom. Please reconstitute protein in deionized sterile water to a concentration of 0.1-1.0 mg/mL. We recommend to add 5-50% of glycerol (final concentration) and aliquot for long-term storage at $-20^{\circ}\text{C}/-80^{\circ}\text{C}$. Our default final concentration of glycerol is 50%. Customers could use it as reference.

Shelf Life

The shelf life is related to many factors, storage state, buffer ingredients, storage temperature and the stability of the protein itself. Generally, the shelf life of liquid form is 6 months at $-20^{\circ}\text{C}/-80^{\circ}\text{C}$. The shelf life of lyophilized form is 12 months at $-20^{\circ}\text{C}/-80^{\circ}\text{C}$.