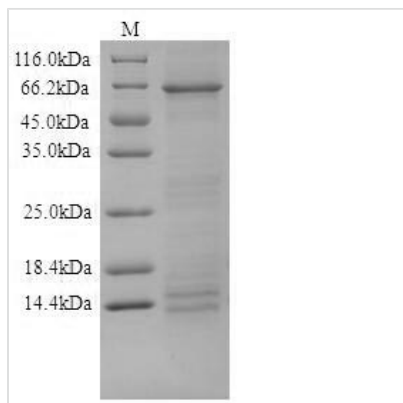


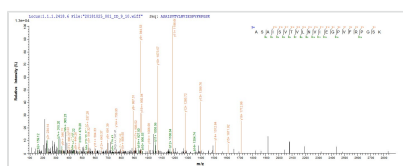


# Recombinant Human Desmoglein-1 (DSG1), partial

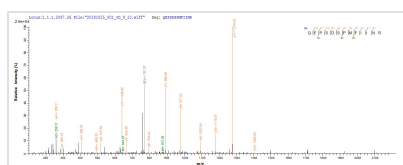
<b>Product Code</b>	CSB-CF861938HU
<b>Relevance</b>	Component of intercellular desmosome junctions. Involved in the interaction of plaque proteins and intermediate filaments mediating cell-cell adhesion.
<b>Abbreviation</b>	Recombinant Human DSG1 protein, partial
<b>Storage</b>	The shelf life is related to many factors, storage state, buffer ingredients, storage temperature and the stability of the protein itself. Generally, the shelf life of liquid form is 6 months at -20°C/-80°C. The shelf life of lyophilized form is 12 months at -20°C/-80°C.
<b>Uniprot No.</b>	Q02413
<b>Storage Buffer</b>	Lyophilized from Tris/PBS-based buffer, 6% Trehalose
<b>Product Type</b>	Transmembrane Protein
<b>Immunogen Species</b>	Homo sapiens(Human)
<b>Purity</b>	≥ 90% as determined by SDS-PAGE.
<b>Sequence</b>	EWIKFAAACREGEDNSKRNP IAKIHSDCAANQQV TYRISGVGIDQPPYGIFVIN QKTGEINITSIVDREVT PFFIIYCRALNSMGQDLERPLELRV RVL DINDNPPVFS MATFAGQIEENSANTL VMILNATDADEPNLNSKIAFKIIRQEP SDSPMFIINRN TGEIRTMNNFLDREQY GQYALAVRGS DRDGGADGMSAECECN IKILDVNDNIP YMEQSSYTIEIQENTL NSNLEIRVIDLDEEFSANWMAV IFFISGNEGNWFEIEM NERTNVGILKVVKPLDYE AMQSLQLSIGVRNKA E F HHSIMSQYK LKAS AISVTV LNVIEGPVFRPGSKTY VVTGNMGSNDKVGDFVATDLDTGR P STTVRYVMGNN PADLLAVDSRTGKLTLKNKVTKEQYNMLGGKYQG TILSIDDNLQRTCTGTININI QSGFNDDRTNTEPNTKIT T NTGRQESTSSTNYDTSTTSTDSSQVYSSEPGNG AKDLLSDNVHFGP
<b>Research Area</b>	Signal Transduction
<b>Source</b>	in vitro E.coli expression system
<b>Target Names</b>	DSG1
<b>Protein Names</b>	Cadherin family member 4 Desmosomal glycoprotein 1
<b>Expression Region</b>	50-548aa
<b>Notes</b>	Repeated freezing and thawing is not recommended. Store working aliquots at 4°C for up to one week.
<b>Tag Info</b>	N-terminal 10xHis-tagged and C-terminal Myc-tagged
<b>Mol. Weight</b>	60.4kDa
<b>Protein Length</b>	Extracellular Domain
<b>Image</b>	



(Tris-Glycine gel) Discontinuous SDS-PAGE (reduced) with 5% enrichment gel and 15% separation gel.



Based on the SEQUEST from database of E.coli host and target protein, the LC-MS/MS Analysis result of CSB-CF861938HU could indicate that this peptide derived from E.coli-expressed Homo sapiens(Human) DSG1.



Based on the SEQUEST from database of E.coli host and target protein, the LC-MS/MS Analysis result of CSB-CF861938HU could indicate that this peptide derived from E.coli-expressed Homo sapiens(Human) DSG1.

### Reconstitution

We recommend that this vial be briefly centrifuged prior to opening to bring the contents to the bottom. Please reconstitute protein in deionized sterile water to a concentration of 0.1-1.0 mg/mL. We recommend to add 5-50% of glycerol (final concentration) and aliquot for long-term storage at -20°C/-80°C. Our default final concentration of glycerol is 50%. Customers could use it as reference.

### Shelf Life

The shelf life is related to many factors, storage state, buffer ingredients, storage temperature and the stability of the protein itself. Generally, the shelf life of liquid form is 6 months at -20°C/-80°C. The shelf life of lyophilized form is 12 months at -20°C/-80°C.