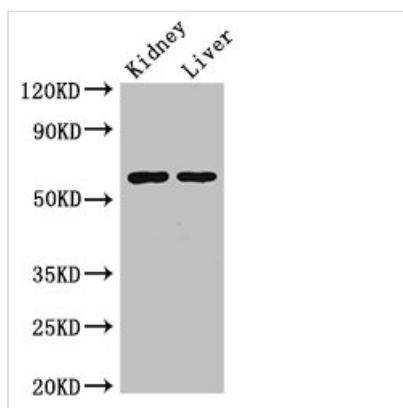




ALDH6A1 Antibody

Product Code	CSB-PA001578LA01HU
Storage	Upon receipt, store at -20°C or -80°C. Avoid repeated freeze.
Uniprot No.	Q02252
Immunogen	Recombinant Human Methylmalonate-semialdehyde dehydrogenase [acylating], mitochondrial protein (274-399AA)
Raised In	Rabbit
Species Reactivity	Human, Mouse
Tested Applications	ELISA, WB, IHC; Recommended dilution: WB:1:500-1:5000, IHC:1:20-1:200
Form	Liquid
Conjugate	Non-conjugated
Storage Buffer	Preservative: 0.03% Proclin 300 Constituents: 50% Glycerol, 0.01M PBS, PH 7.4
Purification Method	>95%, Protein G purified
Isotype	IgG
Clonality	Polyclonal
Alias	Methylmalonate-semialdehyde dehydrogenase [acylating], mitochondrial (MMSDH) (Malonate-semialdehyde dehydrogenase [acylating]) (EC 1.2.1.18) (EC 1.2.1.27) (Aldehyde dehydrogenase family 6 member A1), ALDH6A1, MMSDH
Immunogen Species	Homo sapiens (Human)
Research Area	Signal Transduction
Target Names	ALDH6A1

Image



Western Blot

Positive WB detected in: Mouse kidney tissue, Mouse liver tissue

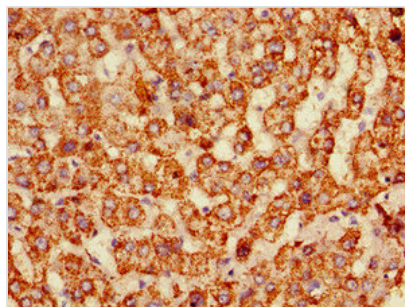
All lanes: ALDH6A1 antibody at 2.5µg/ml

Secondary

Goat polyclonal to rabbit IgG at 1/50000 dilution

Predicted band size: 58, 57 kDa

Observed band size: 58 kDa



Immunohistochemistry of paraffin-embedded human liver tissue using CSB-PA001578LA01HU at dilution of 1:100

Usage

For Research Use Only. Not for use in diagnostic or therapeutic procedures.