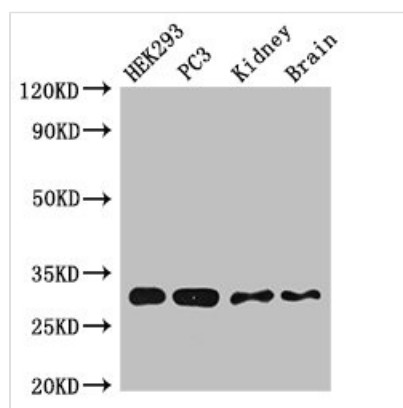




# CBR1 Antibody

<b>Product Code</b>	CSB-PA004586LA01HU
<b>Storage</b>	Upon receipt, store at -20°C or -80°C. Avoid repeated freeze.
<b>Uniprot No.</b>	P16152
<b>Immunogen</b>	Recombinant Human Carbonyl reductase [NADPH] 1 protein (176-268AA)
<b>Raised In</b>	Rabbit
<b>Species Reactivity</b>	Human, Mouse
<b>Tested Applications</b>	ELISA, WB, IF; Recommended dilution: WB:1:500-1:5000, IF:1:50-1:200
<b>Form</b>	Liquid
<b>Conjugate</b>	Non-conjugated
<b>Storage Buffer</b>	Preservative: 0.03% Proclin 300 Constituents: 50% Glycerol, 0.01M PBS, PH 7.4
<b>Purification Method</b>	>95%, Protein G purified
<b>Isotype</b>	IgG
<b>Clonality</b>	Polyclonal
<b>Alias</b>	Carbonyl reductase [NADPH] 1 (EC 1.1.1.184) (15-hydroxyprostaglandin dehydrogenase [NADP(+)] (EC 1.1.1.197) (NADPH-dependent carbonyl reductase 1) (Prostaglandin 9-ketoreductase) (Prostaglandin-E(2) 9-reductase) (EC 1.1.1.189) (Short chain dehydrogenase/reductase family 21C member 1), CBR1, CBR CRN SDR21C1
<b>Immunogen Species</b>	Homo sapiens (Human)
<b>Research Area</b>	Signal Transduction
<b>Target Names</b>	CBR1

## Image



### Western Blot

Positive WB detected in: HEK293 whole cell lysate, PC-3 whole cell lysate, Mouse kidney tissue, Mouse brain tissue

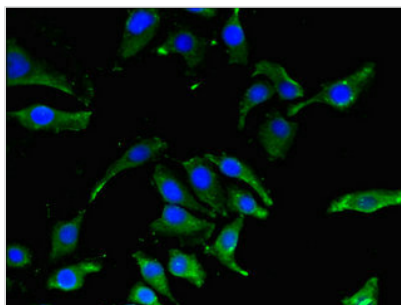
All lanes: CBR1 antibody at 2.5µg/ml

Secondary

Goat polyclonal to rabbit IgG at 1/50000 dilution

Predicted band size: 31, 19 KDa

Observed band size: 31 KDa



Immunofluorescent analysis of A549 cells using CSB-PA004586LA01HU at dilution of 1:100 and Alexa Fluor 488-conjugated AffiniPure Goat Anti-Rabbit IgG(H+L)