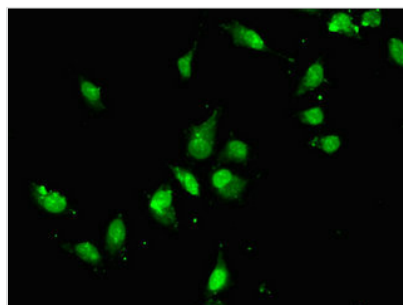




CDC27 Antibody

Product Code	CSB-PA004999LA01HU
Storage	Upon receipt, store at -20°C or -80°C. Avoid repeated freeze.
Uniprot No.	P30260
Immunogen	Recombinant Human Cell division cycle protein 27 homolog protein (258-431AA)
Raised In	Rabbit
Species Reactivity	Human
Tested Applications	ELISA, IF; Recommended dilution: IF:1:50-1:200
Form	Liquid
Conjugate	Non-conjugated
Storage Buffer	Preservative: 0.03% Proclin 300 Constituents: 50% Glycerol, 0.01M PBS, PH 7.4
Purification Method	>95%, Protein G purified
Isotype	IgG
Clonality	Polyclonal
Alias	Cell division cycle protein 27 homolog (Anaphase-promoting complex subunit 3) (APC3) (CDC27 homolog) (CDC27Hs) (H-NUC), CDC27, ANAPC3 D0S1430E D17S978E
Immunogen Species	Homo sapiens (Human)
Research Area	Cell Biology
Target Names	CDC27

Image



Immunofluorescent analysis of HeLa cells using CSB-PA004999LA01HU at dilution of 1:100 and Alexa Fluor 488-conjugated AffiniPure Goat Anti-Rabbit IgG(H+L)