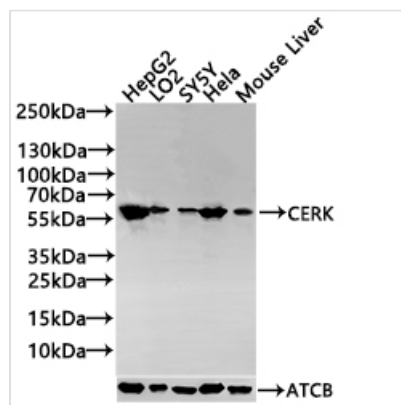




CERK Antibody

| | |
|----------------------------|---|
| Product Code | CSB-PA005256LA01HU |
| Storage | Upon receipt, store at -20°C or -80°C. Avoid repeated freeze. |
| Uniprot No. | Q8TCT0 |
| Immunogen | Synthesized peptide derived from human CERK |
| Raised In | Rabbit |
| Species Reactivity | Human, Mouse |
| Tested Applications | ELISA, WB; Recommended dilution: WB:1:500-1:2000 |
| Form | Liquid |
| Storage Buffer | Liquid in PBS containing 50% glycerol, 0.5% BSA and 0.02% sodium azide. |
| Purification Method | Antigen affinity purification |
| Isotype | IgG |
| Clonality | Polyclonal |
| Product Type | Polyclonal Antibody |
| Immunogen Species | Homo sapiens (Human) |
| Research Area | Cell Biology |
| Target Names | CERK |

Image



Western Blot

Positive WB detected in: HepG2 whole cell lysate(30µg), LO2 whole cell lysate(30µg), SY5Y whole cell lysate(30µg), HeLa whole cell lysate(30µg), Mouse Liver tissue lysate(30µg)
All lanes: CERK antibody at 1:1000

Secondary

Goat polyclonal to rabbit IgG at 1/20000 dilution
Predicted band size: 60,38 kDa
Observed band size: 60 kDa
Exposure time: 120s

Usage

For Research Use Only. Not for use in diagnostic or therapeutic procedures.