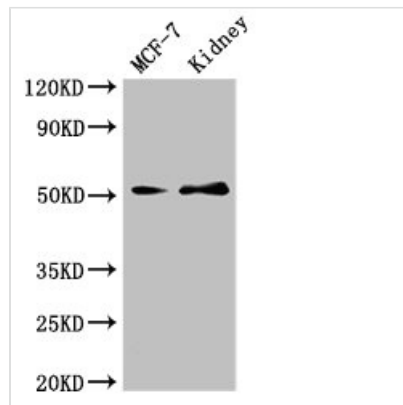




GFRA1 Antibody

Product Code	CSB-PA009379LA01HU
Storage	Upon receipt, store at -20°C or -80°C. Avoid repeated freeze.
Uniprot No.	P56159
Immunogen	Recombinant Human GDNF family receptor alpha-1 protein (230-385AA)
Raised In	Rabbit
Species Reactivity	Human, Mouse
Tested Applications	ELISA, WB, IHC, IF; Recommended dilution: WB:1:500-1:5000, IHC:1:20-1:200, IF:1:50-1:200
Form	Liquid
Conjugate	Non-conjugated
Storage Buffer	Preservative: 0.03% Proclin 300 Constituents: 50% Glycerol, 0.01M PBS, PH 7.4
Purification Method	>95%, Protein G purified
Isotype	IgG
Clonality	Polyclonal
Alias	GDNF family receptor alpha-1 (GDNF receptor alpha-1) (GDNFR-alpha-1) (GFR-alpha-1) (RET ligand 1) (TGF-beta-related neurotrophic factor receptor 1), GFRA1, GDNFRA RETL1 TRNR1
Immunogen Species	Homo sapiens (Human)
Research Area	Neuroscience
Target Names	GFRA1

Image



Western Blot

Positive WB detected in: MCF-7 whole cell lysate, Mouse kidney tissue

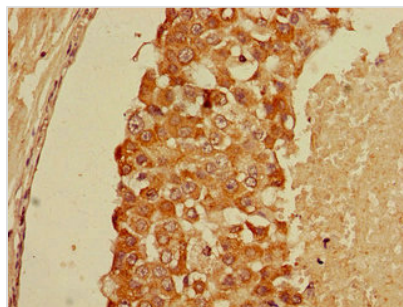
All lanes: GFRA1 antibody at 3µg/ml

Secondary

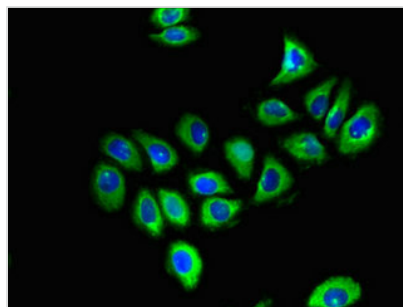
Goat polyclonal to rabbit IgG at 1/50000 dilution

Predicted band size: 52, 51 kDa

Observed band size: 52 kDa



Immunohistochemistry of paraffin-embedded human breast cancer using CSB-PA009379LA01HU at dilution of 1:100



Immunofluorescent analysis of A549 cells using CSB-PA009379LA01HU at dilution of 1:100 and Alexa Fluor 488-conjugated AffiniPure Goat Anti-Rabbit IgG(H+L)