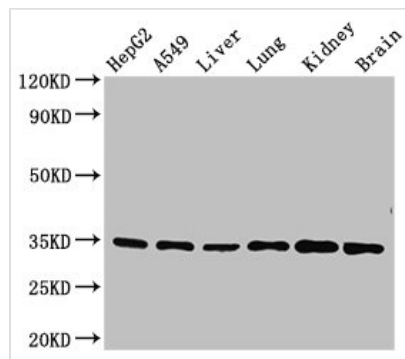




GFRA2 Antibody

Product Code	CSB-PA009380LA01HU
Storage	Upon receipt, store at -20°C or -80°C. Avoid repeated freeze.
Uniprot No.	O00451
Immunogen	Recombinant Human GDNF family receptor alpha-2 protein (242-415AA)
Raised In	Rabbit
Species Reactivity	Human, Mouse
Tested Applications	ELISA, WB, IF; Recommended dilution: WB:1:500-1:5000, IF:1:50-1:200
Form	Liquid
Conjugate	Non-conjugated
Storage Buffer	Preservative: 0.03% Proclin 300 Constituents: 50% Glycerol, 0.01M PBS, PH 7.4
Purification Method	>95%, Protein G purified
Isotype	IgG
Clonality	Polyclonal
Alias	GDNF family receptor alpha-2 (GDNF receptor alpha-2) (GDNFR-alpha-2) (GFR-alpha-2) (GDNF receptor beta) (GDNFR-beta) (Neurturin receptor alpha) (NRTNR-alpha) (NTNR-alpha) (RET ligand 2) (TGF-beta-related neurotrophic factor receptor 2), GFRA2, GDNFRB RETL2 TRNR2
Immunogen Species	Homo sapiens (Human)
Research Area	Neuroscience
Target Names	GFRA2

Image



Western Blot

Positive WB detected in: HepG2 whole cell lysate, A549 whole cell lysate, Mouse liver tissue, Mouse lung tissue, Mouse kidney tissue, Mouse brain tissue

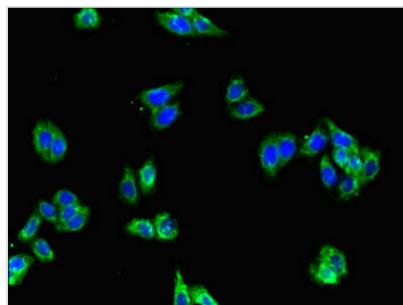
All lanes: GFRA2 antibody at 3.5µg/ml

Secondary

Goat polyclonal to rabbit IgG at 1/50000 dilution

Predicted band size: 52, 37, 40 kDa

Observed band size: 34 kDa



Immunofluorescent analysis of HepG2 cells using CSB-PA009380LA01HU at dilution of 1:100 and Alexa Fluor 488-conjugated AffiniPure Goat Anti-Rabbit IgG(H+L)