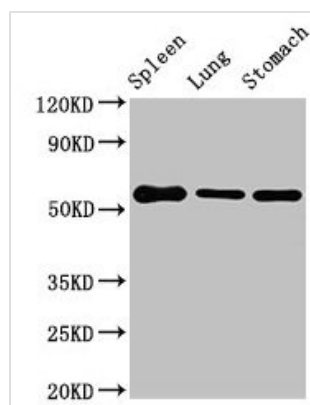




Glp1r Antibody

Product Code	CSB-PA009514HA01MO
Storage	Upon receipt, store at -20°C or -80°C. Avoid repeated freeze.
Uniprot No.	O35659
Immunogen	Recombinant Mouse Glucagon-like peptide 1 receptor protein (22-145AA)
Raised In	Rabbit
Species Reactivity	Mouse
Tested Applications	ELISA, WB; Recommended dilution: WB:1:500-1:5000
Form	Liquid
Conjugate	Non-conjugated
Storage Buffer	Preservative: 0.03% Proclin 300 Constituents: 50% Glycerol, 0.01M PBS, PH 7.4
Purification Method	>95%, Protein G purified
Isotype	IgG
Clonality	Polyclonal
Alias	Glucagon-like peptide 1 receptor (GLP-1 receptor) (GLP-1-R) (GLP-1R), Glp1r
Immunogen Species	Mus musculus (Mouse)
Research Area	Neuroscience
Target Names	Glp1r

Image



Western Blot

Positive WB detected in: Mouse spleen tissue, Mouse lung tissue, Mouse stomach tissue

All lanes: Glp1r antibody at 3µg/ml

Secondary

Goat polyclonal to rabbit IgG at 1/50000 dilution

Predicted band size: 54 kDa

Observed band size: 54 kDa