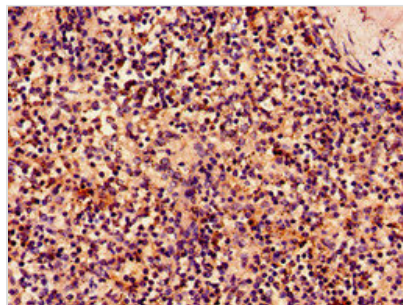




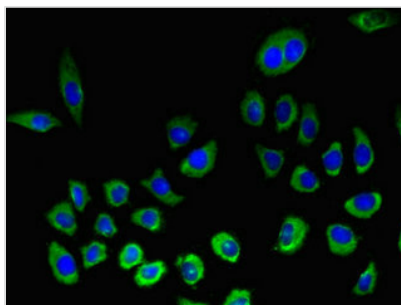
KLRK1 Antibody

Product Code	CSB-PA012474LA01HU
Storage	Upon receipt, store at -20°C or -80°C. Avoid repeated freeze.
Uniprot No.	P26718
Immunogen	Recombinant Human NKG2-D type II integral membrane protein (73-216AA)
Raised In	Rabbit
Species Reactivity	Human
Tested Applications	ELISA, WB, IHC, IF; Recommended dilution: WB:1:500-1:5000, IHC:1:20-1:200, IF:1:50-1:200
Form	Liquid
Conjugate	Non-conjugated
Storage Buffer	Preservative: 0.03% Proclin 300 Constituents: 50% Glycerol, 0.01M PBS, PH 7.4
Purification Method	>95%, Protein G purified
Isotype	IgG
Clonality	Polyclonal
Alias	NKG2-D type II integral membrane protein (Killer cell lectin-like receptor subfamily K member 1) (NK cell receptor D) (NKG2-D-activating NK receptor) (CD antigen CD314), KLRK1, D12S2489E NKG2D
Immunogen Species	Homo sapiens (Human)
Research Area	Immunology
Target Names	KLRK1

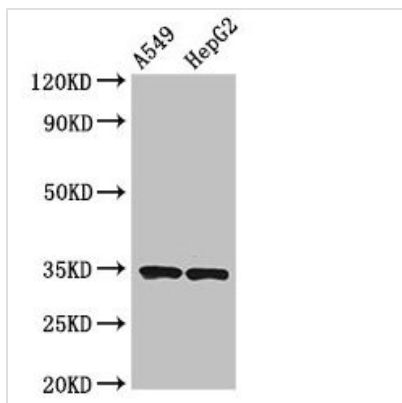
Image



Immunohistochemistry of paraffin-embedded human spleen tissue using CSB-PA012474LA01HU at dilution of 1:100



Immunofluorescent analysis of A549 cells using CSB-PA012474LA01HU at dilution of 1:100 and Alexa Fluor 488-conjugated AffiniPure Goat Anti-Rabbit IgG(H+L)



Western Blot

Positive WB detected in: A549 whole cell lysate, HepG2 whole cell lysate

All lanes: KLRK1 antibody at 3.7μg/ml

Secondary

Goat polyclonal to rabbit IgG at 1/50000 dilution

Predicted band size: 26 kDa

Observed band size: 34 kDa