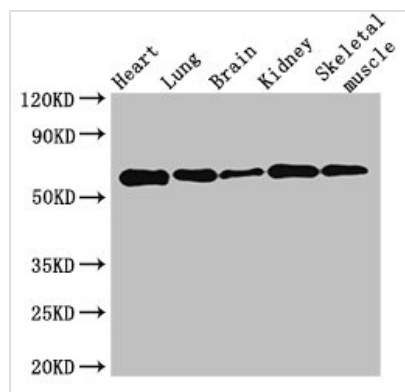




KPNA4 Antibody

Product Code	CSB-PA012486LA01HU
Storage	Upon receipt, store at -20°C or -80°C. Avoid repeated freeze.
Uniprot No.	O00629
Immunogen	Recombinant Human Importin subunit alpha-3 protein (51-239AA)
Raised In	Rabbit
Species Reactivity	Human, Mouse
Tested Applications	ELISA, WB, IHC, IF; Recommended dilution: WB:1:500-1:5000, IHC:1:20-1:200, IF:1:50-1:200
Form	Liquid
Conjugate	Non-conjugated
Storage Buffer	Preservative: 0.03% Proclin 300 Constituents: 50% Glycerol, 0.01M PBS, PH 7.4
Purification Method	>95%, Protein G purified
Isotype	IgG
Clonality	Polyclonal
Alias	Importin subunit alpha-3 (Importin alpha Q1) (Qip1) (Karyopherin subunit alpha-4), KPNA4, QIP1
Immunogen Species	Homo sapiens (Human)
Research Area	Signal Transduction
Target Names	KPNA4

Image



Western Blot

Positive WB detected in: Mouse heart tissue, Mouse lung tissue, Mouse brain tissue, Mouse kidney tissue, Mouse skeletal muscle tissue

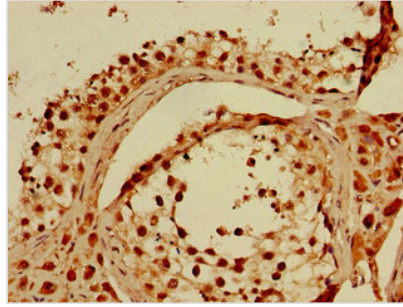
All lanes: KPNA4 antibody at 3.5µg/ml

Secondary

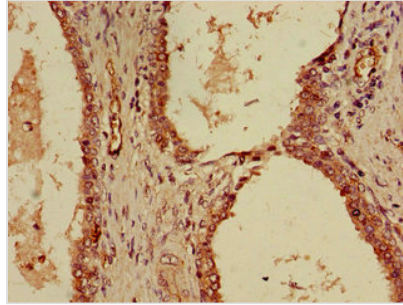
Goat polyclonal to rabbit IgG at 1/50000 dilution

Predicted band size: 58 kDa

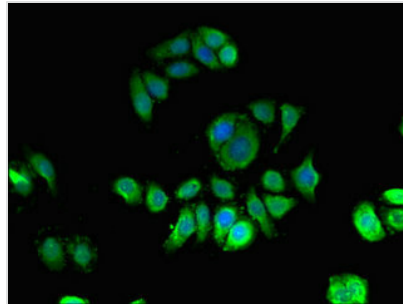
Observed band size: 58 kDa



Immunohistochemistry of paraffin-embedded human testis tissue using CSB-PA012486LA01HU at dilution of 1:100



Immunohistochemistry of paraffin-embedded human prostate cancer using CSB-PA012486LA01HU at dilution of 1:100



Immunofluorescent analysis of PC-3 cells using CSB-PA012486LA01HU at dilution of 1:100 and Alexa Fluor 488-conjugated AffiniPure Goat Anti-Rabbit IgG(H+L)

Usage

For Research Use Only. Not for use in diagnostic or therapeutic procedures.