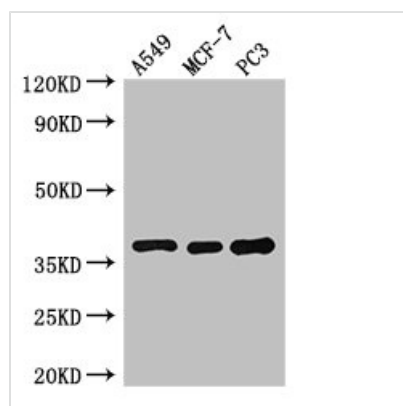




SLC9A3R2 Antibody

Product Code	CSB-PA01759A0Rb
Storage	Upon receipt, store at -20°C or -80°C. Avoid repeated freeze.
Uniprot No.	Q15599
Immunogen	Recombinant Human Na(+)/H(+) exchange regulatory cofactor NHE-RF2 protein (106-313AA)
Raised In	Rabbit
Species Reactivity	Human
Tested Applications	ELISA, WB, IHC; Recommended dilution: WB:1:500-1:5000, IHC:1:20-1:200
Form	Liquid
Conjugate	Non-conjugated
Storage Buffer	Preservative: 0.03% Proclin 300 Constituents: 50% Glycerol, 0.01M PBS, PH 7.4
Purification Method	>95%, Protein G purified
Isotype	IgG
Clonality	Polyclonal
Alias	Na(+)/H(+) exchange regulatory cofactor NHE-RF2 (NHERF-2) (NHE3 kinase A regulatory protein E3KARP) (SRY-interacting protein 1) (SIP-1) (Sodium-hydrogen exchanger regulatory factor 2) (Solute carrier family 9 isoform A3 regulatory factor 2) (Tyrosine kinase activator protein 1) (TKA-1), SLC9A3R2, NHERF2
Immunogen Species	Homo sapiens (Human)
Research Area	Signal Transduction
Target Names	SLC9A3R2

Image

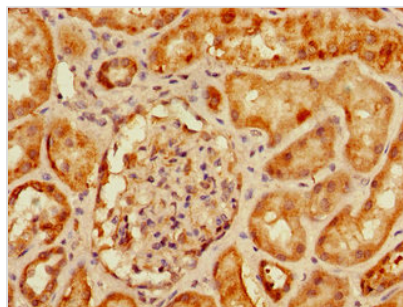


Western Blot

Positive WB detected in: A549 whole cell lysate, MCF-7 whole cell lysate, PC-3 whole cell lysate
All lanes: SLC9A3R2 antibody at 3μg/ml

Secondary

Goat polyclonal to rabbit IgG at 1/50000 dilution
Predicted band size: 38, 37, 25 kDa
Observed band size: 38 kDa



Immunohistochemistry of paraffin-embedded human kidney tissue using CSB-PA01759A0Rb at dilution of 1:100