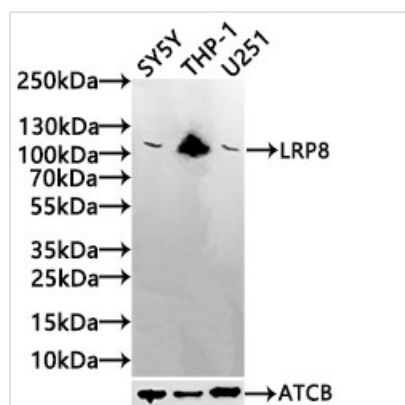




LRP8 Antibody

Product Code	CSB-PA623900LA01HU
Storage	Upon receipt, store at -20°C or -80°C. Avoid repeated freeze.
Uniprot No.	Q14114
Immunogen	The antiserum was produced against synthesized peptide derived from human LRP8. AA range:451-500
Raised In	Rabbit
Species Reactivity	Human
Tested Applications	ELISA, WB; Recommended dilution: WB:1:500-1:2000
Form	Liquid
Storage Buffer	Liquid in PBS containing 50% glycerol, 0.5% BSA and 0.02% sodium azide.
Purification Method	Antigen affinity purification
Isotype	IgG
Clonality	Polyclonal
Product Type	Polyclonal Antibody
Immunogen Species	Homo sapiens (Human)
Research Area	Neuroscience
Target Names	LRP8

Image



Western Blot

Positive WB detected in: SY5Y whole cell lysate(30µg), THP-1 whole cell lysate(30µg), U251 whole cell lysate(30µg)

All lanes: LRP8 antibody at 1:1000

Secondary

Goat polyclonal to rabbit IgG at 1/40000 dilution

Predicted band size: 106,78,100,88 kDa

Observed band size: 106 kDa

Exposure time: 120s

Usage

For Research Use Only. Not for use in diagnostic or therapeutic procedures.