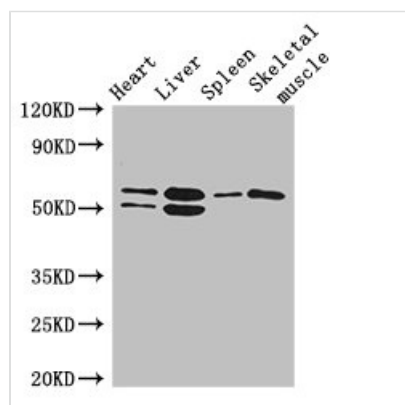




SLC15A3 Antibody

Product Code	CSB-PA815578LA01HU
Storage	Upon receipt, store at -20°C or -80°C. Avoid repeated freeze.
Uniprot No.	Q8IY34
Immunogen	Recombinant Human Solute carrier family 15 member 3 protein (253-309AA)
Raised In	Rabbit
Species Reactivity	Human, Mouse
Tested Applications	ELISA, WB, IHC; Recommended dilution: WB:1:500-1:5000, IHC:1:20-1:200
Form	Liquid
Conjugate	Non-conjugated
Storage Buffer	Preservative: 0.03% Proclin 300 Constituents: 50% Glycerol, 0.01M PBS, PH 7.4
Purification Method	>95%, Protein G purified
Isotype	IgG
Clonality	Polyclonal
Alias	Solute carrier family 15 member 3 (Osteoclast transporter) (Peptide transporter 3) (Peptide/histidine transporter 2), SLC15A3, OCTP PHT2 PTR3
Immunogen Species	Homo sapiens (Human)
Research Area	Others
Target Names	SLC15A3

Image



Western Blot

Positive WB detected in: Mouse heart tissue, Mouse liver tissue, Mouse spleen tissue, Mouse skeletal muscle tissue

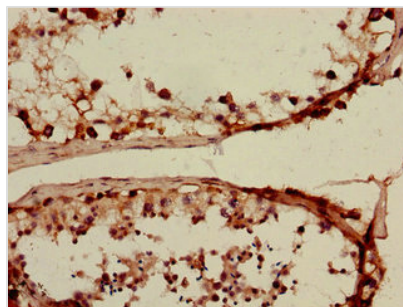
All lanes: SLC15A3 antibody at 5µg/ml

Secondary

Goat polyclonal to rabbit IgG at 1/50000 dilution

Predicted band size: 64 kDa

Observed band size: 64, 50 kDa



Immunohistochemistry of paraffin-embedded human testis tissue using CSB-PA815578LA01HU at dilution of 1:100