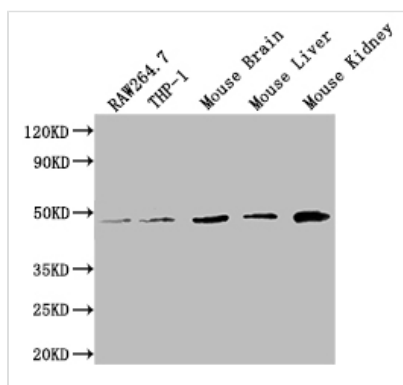




WDFY1 Antibody

Product Code	CSB-PA816890LA01HU
Storage	Upon receipt, store at -20°C or -80°C. Avoid repeated freeze.
Uniprot No.	Q8IWB7
Immunogen	Recombinant Human WD repeat and FYVE domain-containing protein 1 protein (261-357AA)
Raised In	Rabbit
Species Reactivity	Human, Mouse
Tested Applications	ELISA, WB; Recommended dilution: WB:1:500-1:5000
Form	Liquid
Conjugate	Non-conjugated
Storage Buffer	Preservative: 0.03% Proclin 300 Constituents: 50% Glycerol, 0.01M PBS, PH 7.4
Purification Method	>95%, Protein G purified
Isotype	IgG
Clonality	Polyclonal
Product Type	Polyclonal Antibody
Immunogen Species	Homo sapiens (Human)
Research Area	Tags & Cell Markers
Target Names	WDFY1

Image



Western Blot

Positive WB detected in: RAW264.7 whole cell lysate, THP-1 whole cell lysate, Mouse Brain tissue lysate, Mouse Liver tissue lysate, Mouse Kidney tissue lysate

All lanes: WDFY1 antibody at 1:2000

Secondary

Goat polyclonal to rabbit IgG at 1/50000 dilution

Predicted band size: 47 kDa

Observed band size: 47 kDa

Usage

For Research Use Only. Not for use in diagnostic or therapeutic procedures.