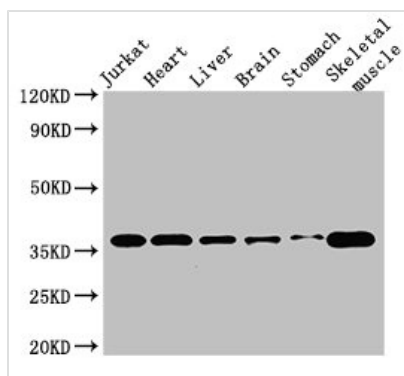




USE1 Antibody

Product Code	CSB-PA889157LA01HU
Storage	Upon receipt, store at -20°C or -80°C. Avoid repeated freeze.
Uniprot No.	Q9NZ43
Immunogen	Recombinant Human Vesicle transport protein USE1 protein (1-146AA)
Raised In	Rabbit
Species Reactivity	Human, Mouse
Tested Applications	ELISA, WB, IF, IP; Recommended dilution: WB:1:500-1:5000, IF:1:50-1:500, IP:1:200-1:2000
Form	Liquid
Conjugate	Non-conjugated
Storage Buffer	Preservative: 0.03% Proclin 300 Constituents: 50% Glycerol, 0.01M PBS, PH 7.4
Purification Method	>95%, Protein G purified
Isotype	IgG
Clonality	Polyclonal
Alias	Vesicle transport protein USE1 (Putative MAPK-activating protein PM26) (USE1-like protein) (p31), USE1, USE1L
Immunogen Species	Homo sapiens (Human)
Research Area	Signal Transduction
Target Names	USE1

Image



Western Blot

Positive WB detected in: Jurkat whole cell lysate, Mouse heart tissue, Mouse brain tissue, Mouse kidney tissue, Mouse stomach tissue, Mouse skeletal muscle tissue

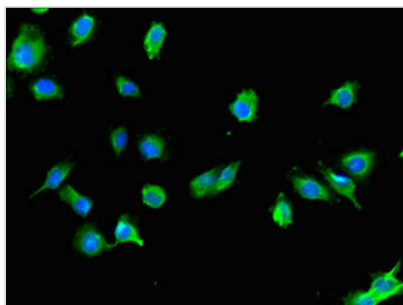
All lanes: USE1 antibody at 2.8µg/ml

Secondary

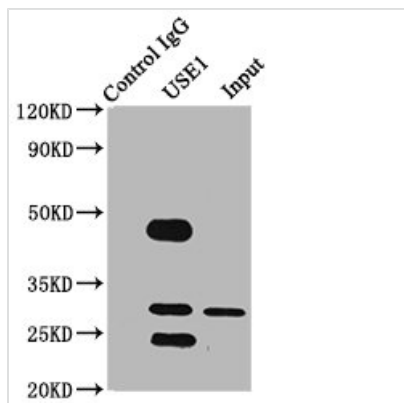
Goat polyclonal to rabbit IgG at 1/50000 dilution

Predicted band size: 30, 17, 16 kDa

Observed band size: 36 kDa



Immunofluorescent analysis of U251 cells using CSB-PA889157LA01HU at dilution of 1:100 and Alexa Fluor 488-conjugated AffiniPure Goat Anti-Rabbit IgG(H+L)



Immunoprecipitating USE1 in PC-3 whole cell lysate

Lane 1: Rabbit control IgG (1 μ g) instead of CSB-PA889157LA01HU in PC-3 whole cell lysate. For western blotting, a HRP-conjugated Protein G antibody was used as the secondary antibody (1/2000)

Lane 2: CSB-PA889157LA01HU (6 μ g) + PC-3 whole cell lysate (500 μ g)

Lane 3: PC-3 whole cell lysate (10 μ g)

Usage

For Research Use Only. Not for use in diagnostic or therapeutic procedures.