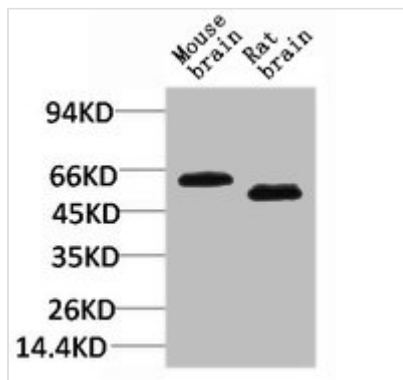




SLC1A2 Antibody

Product Code	CSB-PA302626
Storage	Upon receipt, store at -20°C or -80°C. Avoid repeated freeze.
Uniprot No.	P43004
Immunogen	Synthetic Peptide
Raised In	Rabbit
Species Reactivity	Human,Mouse,Rat
Tested Applications	WB,ELISA;WB:1:1000-2000
Form	Liquid
Conjugate	Non-conjugated
Storage Buffer	Liquid in PBS containing 50% glycerol, 0.5% BSA and 0.02% sodium azide.
Purification Method	The antibody was affinity-purified from rabbit antiserum by affinity-chromatography using specific immunogen.
Immunogen Species	Homo sapiens (Human)
Target Names	SLC1A2

Image



Western blot analysis of 1) Mouse Brain Tissue, 2)Rat Brain Tissue with EAAT2 Rabbit pAb diluted at 1:2,000.