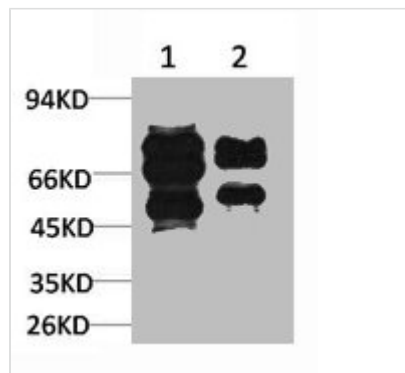




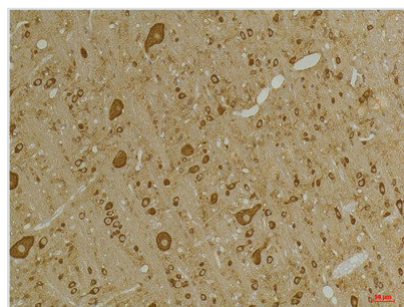
# GABRG2 Antibody

<b>Product Code</b>	CSB-PA288970
<b>Storage</b>	Upon receipt, store at -20°C or -80°C. Avoid repeated freeze.
<b>Uniprot No.</b>	P18507
<b>Immunogen</b>	Synthetic Peptide
<b>Raised In</b>	Rabbit
<b>Species Reactivity</b>	Human,Mouse,Rat
<b>Tested Applications</b>	WB, IHC, ELISA; WB:1:1000-2000, IHC:1:100-200
<b>Form</b>	Liquid
<b>Conjugate</b>	Non-conjugated
<b>Storage Buffer</b>	Liquid in PBS containing 50% glycerol, 0.5% BSA and 0.02% sodium azide.
<b>Purification Method</b>	The antibody was affinity-purified from rabbit antiserum by affinity-chromatography using specific immunogen.
<b>Immunogen Species</b>	Homo sapiens (Human)
<b>Target Names</b>	GABRG2

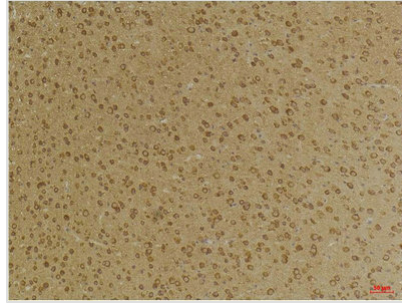
## Image



Western blot analysis of 1) Mouse Brain Tissue, 2)Rat Brain Tissue with GABA A Receptor  $\gamma$ 2 Rabbit pAb diluted at 1:2,000.



Immunohistochemical analysis of paraffin-embedded Rat Brain Tissue using GABA A Receptor  $\gamma$ 2 Rabbit pAb diluted at 1:200.



Immunohistochemical analysis of paraffin-embedded Mouse Brain Tissue using GABA A Receptor  $\gamma 2$  Rabbit pAb diluted at 1:200.

---

**Usage**

For Research Use Only. Not for use in diagnostic or therapeutic procedures.