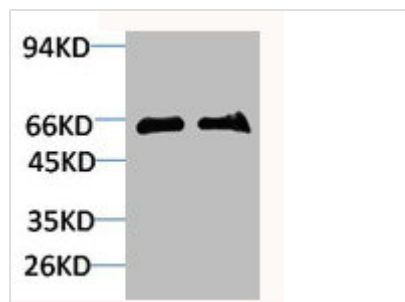




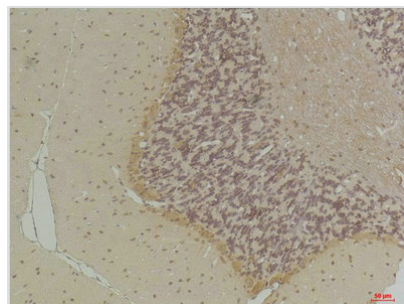
SLC6A1 Antibody

Product Code	CSB-PA801720
Storage	Upon receipt, store at -20°C or -80°C. Avoid repeated freeze.
Uniprot No.	P30531
Immunogen	Synthetic Peptide
Raised In	Rabbit
Species Reactivity	Human,Mouse,Rat
Tested Applications	WB, IHC, ELISA; WB:1:1000-2000, IHC:1:100-200
Form	Liquid
Conjugate	Non-conjugated
Storage Buffer	Liquid in PBS containing 50% glycerol, 0.5% BSA and 0.02% sodium azide.
Purification Method	The antibody was affinity-purified from rabbit antiserum by affinity-chromatography using specific immunogen.
Alias	SLC6A1; GABATR; GABT1; GAT1; Sodium- and chloride-dependent GABA transporter 1; GAT-1; Solute carrier family 6 member 1
Immunogen Species	Homo sapiens (Human)
Target Names	SLC6A1

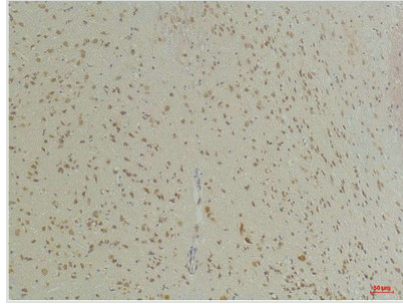
Image



Western blot analysis of 1) Mouse Brain Tissue, 2)Rat Brain Tissue with GABA Transporter 1 Rabbit pAb diluted at 1:2,000.



Immunohistochemical analysis of paraffin-embedded Rat Brain Tissue using GABA Transporter 1 Rabbit pAb diluted at 1:200.



Immunohistochemical analysis of paraffin-embedded Mouse Brain Tissue using GABA Transporter 1 Rabbit pAb diluted at 1:200.

Usage

For Research Use Only. Not for use in diagnostic or therapeutic procedures.