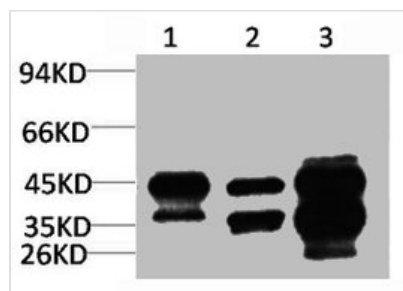




DUSP6 Antibody

Product Code	CSB-PA274273
Storage	Upon receipt, store at -20°C or -80°C. Avoid repeated freeze.
Uniprot No.	Q16828
Immunogen	Synthetic Peptide
Raised In	Rabbit
Species Reactivity	Human,Mouse,Rat
Tested Applications	WB,ELISA;WB:1:1000-3000
Form	Liquid
Conjugate	Non-conjugated
Storage Buffer	Liquid in PBS containing 50% glycerol, 0.5% BSA and 0.02% sodium azide.
Purification Method	The antibody was affinity-purified from rabbit antiserum by affinity-chromatography using specific immunogen.
Alias	DUSP6; MKP3; PYST1; Dual specificity protein phosphatase 6; Dual specificity protein phosphatase PYST1; Mitogen-activated protein kinase phosphatase 3; MAP kinase phosphatase 3; MKP-3
Immunogen Species	Homo sapiens (Human)
Target Names	DUSP6

Image



Western blot analysis of 1) HepG2, 2)3T3, 3) Rat Heart Tissue with DUSP6 Rabbit pAb diluted at 1:3,000.