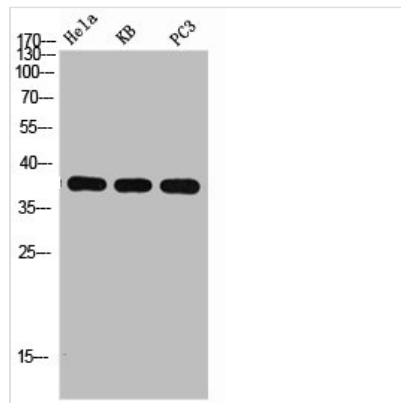




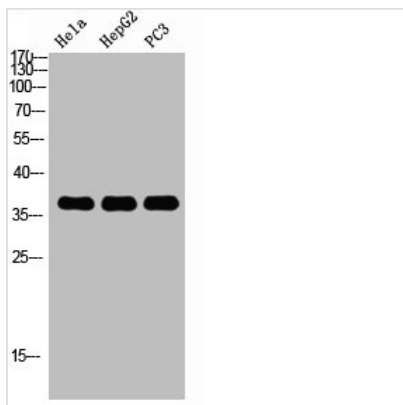
# MAPK14 Antibody

<b>Product Code</b>	CSB-PA115316
<b>Storage</b>	Upon receipt, store at -20°C or -80°C. Avoid repeated freeze.
<b>Uniprot No.</b>	Q16539
<b>Immunogen</b>	Synthesized peptide derived from the C-terminal region of Human p38.
<b>Raised In</b>	Rabbit
<b>Species Reactivity</b>	Human, Mouse, Rat, Chicken
<b>Tested Applications</b>	WB, ELISA; WB:1:500-1:2000, ELISA:1:10000
<b>Form</b>	Liquid
<b>Conjugate</b>	Non-conjugated
<b>Storage Buffer</b>	Liquid in PBS containing 50% glycerol, 0.5% BSA and 0.02% sodium azide.
<b>Purification Method</b>	The antibody was affinity-purified from rabbit antiserum by affinity-chromatography using epitope-specific immunogen.
<b>Alias</b>	MAPK14; CSBP; CSBP1; CSBP2; CSPB1; MXI2; SAPK2A; Mitogen-activated protein kinase 14; MAP kinase 14; MAPK 14; Cytokine suppressive anti-inflammatory drug-binding protein; CSAID-binding protein; CSBP; MAP kinase MXI2; MAX-interacting protein 2; Mitogen-act
<b>Immunogen Species</b>	Homo sapiens (Human)
<b>Target Names</b>	MAPK14

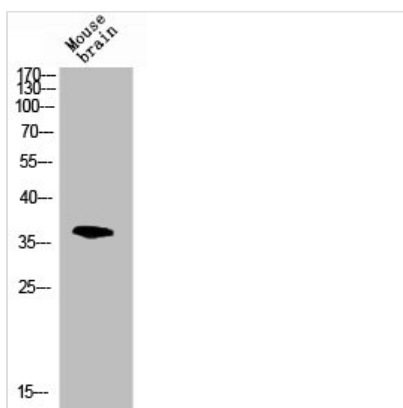
## Image



Western Blot analysis of HELA KB PC-3 using p38 Polyclonal Antibody. Antibody was diluted at 1:1000. Secondary antibody was diluted at 1:20000



Western Blot analysis of HELA HEPG2 PC-3 using p38 Polyclonal Antibody. Antibody was diluted at 1:1000. Secondary antibody was diluted at 1:20000



Western blot analysis of mouse-brain lysis using p38 antibody. Antibody was diluted at 1:1000. Secondary antibody was diluted at 1:20000

## Usage

For Research Use Only. Not for use in diagnostic or therapeutic procedures.