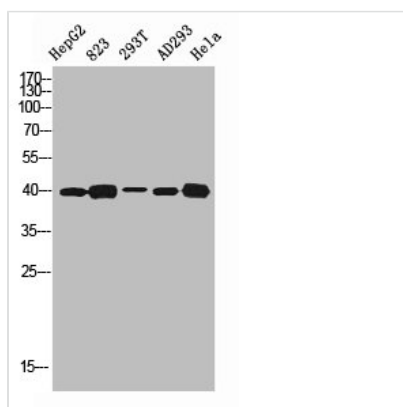




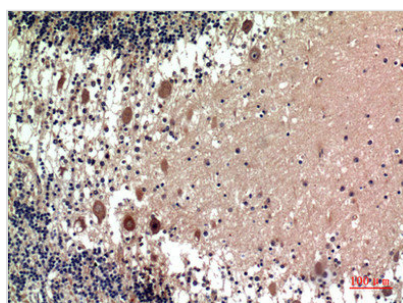
# HTR1D Antibody

<b>Product Code</b>	CSB-PA297872
<b>Storage</b>	Upon receipt, store at -20°C or -80°C. Avoid repeated freeze.
<b>Uniprot No.</b>	P28221
<b>Immunogen</b>	Synthesized peptide derived from the Internal region of Human SR-1D. at AA range: 120-200
<b>Raised In</b>	Rabbit
<b>Species Reactivity</b>	Human,Mouse,Rat
<b>Tested Applications</b>	WB, IHC, ELISA; WB:1:500-1:2000, IHC:1:100-1:300, ELISA:1:10000
<b>Form</b>	Liquid
<b>Conjugate</b>	Non-conjugated
<b>Storage Buffer</b>	Liquid in PBS containing 50% glycerol, 0.5% BSA and 0.02% sodium azide.
<b>Purification Method</b>	The antibody was affinity-purified from rabbit antiserum by affinity-chromatography using epitope-specific immunogen.
<b>Alias</b>	HTR1D; HTR1DA; HTRL; 5-hydroxytryptamine receptor 1D; 5-HT-1D; 5-HT1D; 5-HT-1D-alpha; Serotonin receptor 1D
<b>Immunogen Species</b>	Homo sapiens (Human)
<b>Target Names</b>	HTR1D

## Image



Western blot analysis of HEPG2 823 293T AD293 HELA using SR-1D antibody. Antibody was diluted at 1:500. Secondary antibody was diluted at 1:20000



Immunohistochemical analysis of paraffin-embedded human-brain, antibody was diluted at 1:100

## Usage

For Research Use Only. Not for use in diagnostic or therapeutic procedures.